



*UNITED STATES*  
**DEPARTMENT OF TRANSPORTATION**

**Response, Emergency Staging and Communications,  
Uniform Management, and Evacuation (R.E.S.C.U.M.E.)  
Overview and Status**

Theodore A. Smith, PMP

National Rural ITS Conference – Session S1

*Response, Emergency Staging and Communications, Uniform Management,  
and Evacuation (R.E.S.C.U.M.E.) Overview and Status*

August 29, 2011

Coeur d'Alene, Idaho

# Presentation Overview

---

- Introduction to the DMA Program
- R.E.S.C.U.M.E. application bundle overview
- R.E.S.C.U.M.E. status next steps
- Questions/Comments

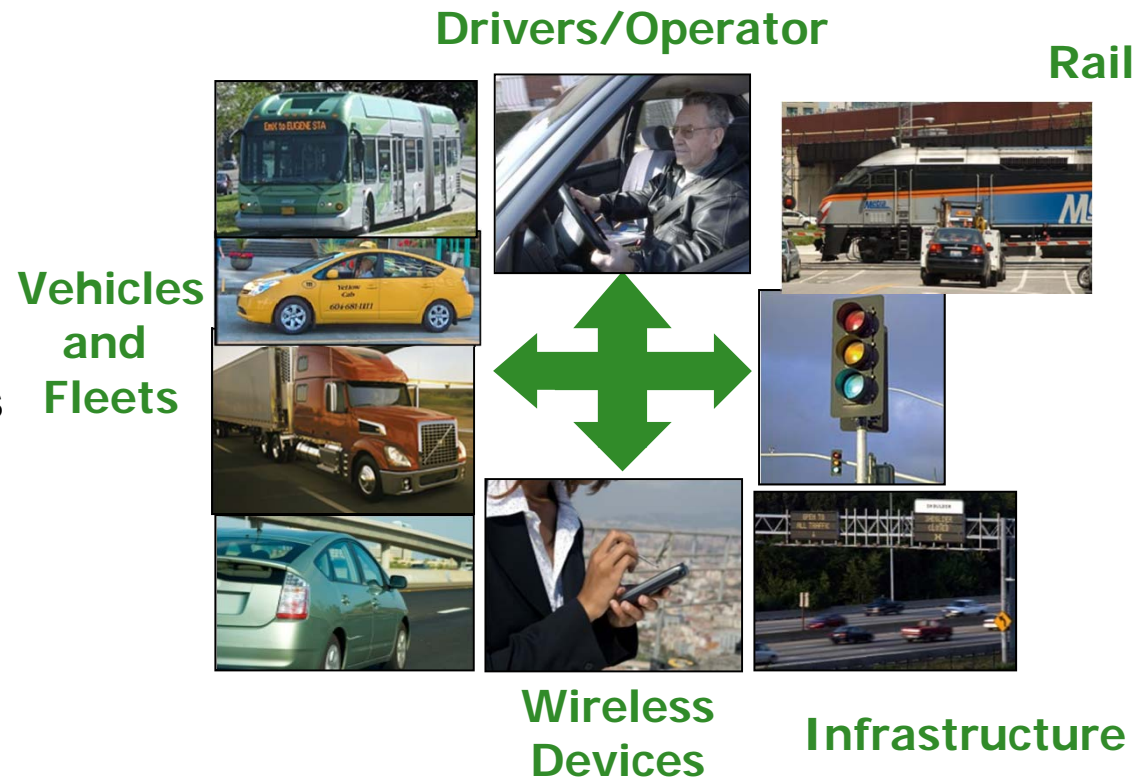
# ITS Research = Multimodal and Connected

To Improve Safety, Mobility  
and Environment

Research of technologies  
and applications that  
use wireless  
communications to  
provide connectivity:

- Among vehicles of all types
- Between vehicles and roadway infrastructure
- Among vehicles, infrastructure and wireless consumer devices

FCC Allocated Spectrum at 5.9  
GHz for Transportation  
Safety (known as DSRC)



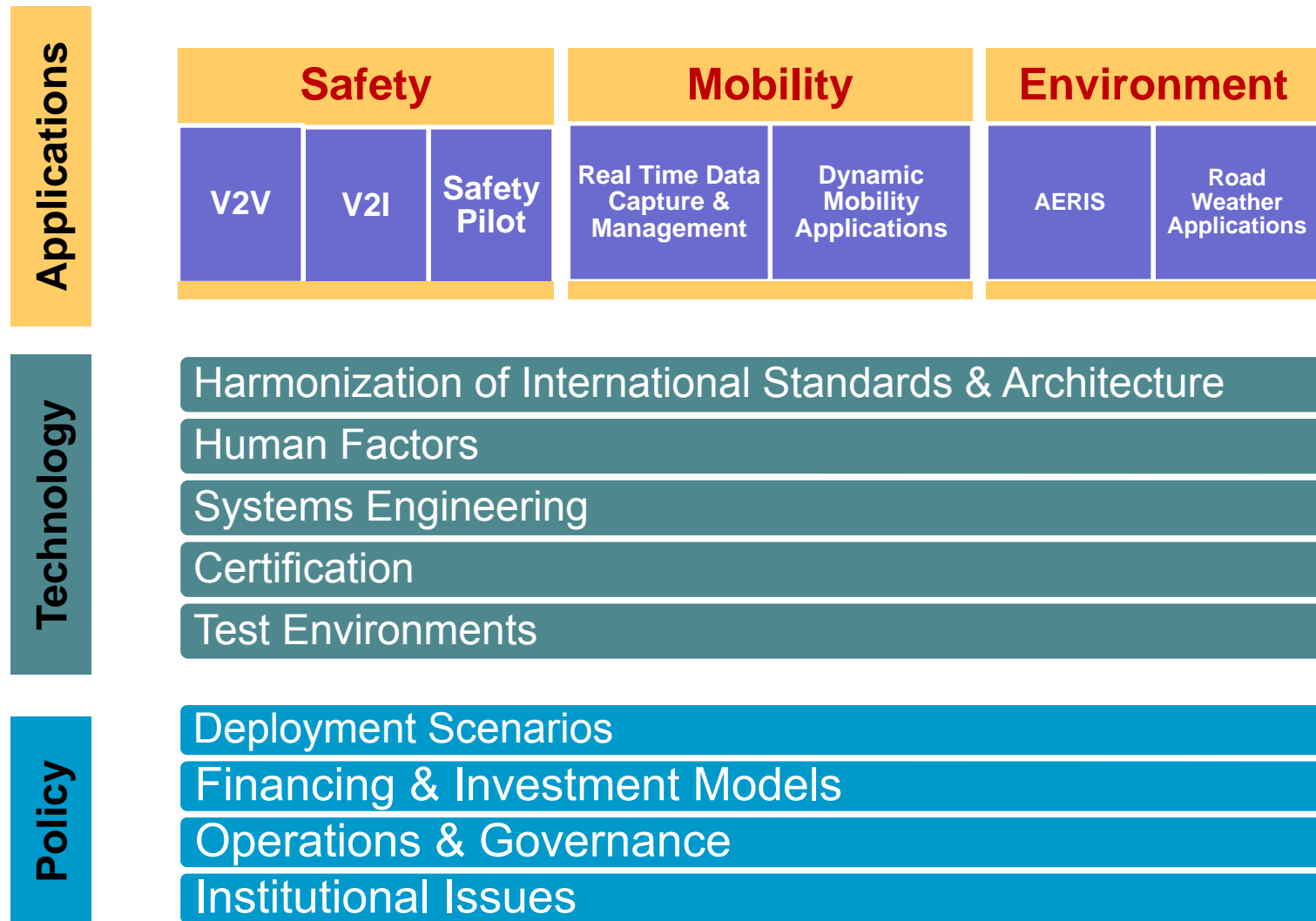
# Major Objectives

---

- Move aggressively on vehicle to vehicle communications
  - Regulatory Decision on In-Vehicle Equipment by 2013
- Accelerate in-vehicle technology
  - “Here I Am” messages
  - Aftermarket Safety Systems
  - Enables safety and active traffic management
- Accelerate infrastructure communications capability
  - Signal Phase and Timing (SPaT) as initial focus
  - Enables safety, mobility, and environmental applications
- On road multi-modal pilot deployments for high-value applications
- Monitor and evaluation of driver distraction issues
- Understand data and communications needs (DSRC/other) of transformative mobility applications – and the potential benefits of these applications

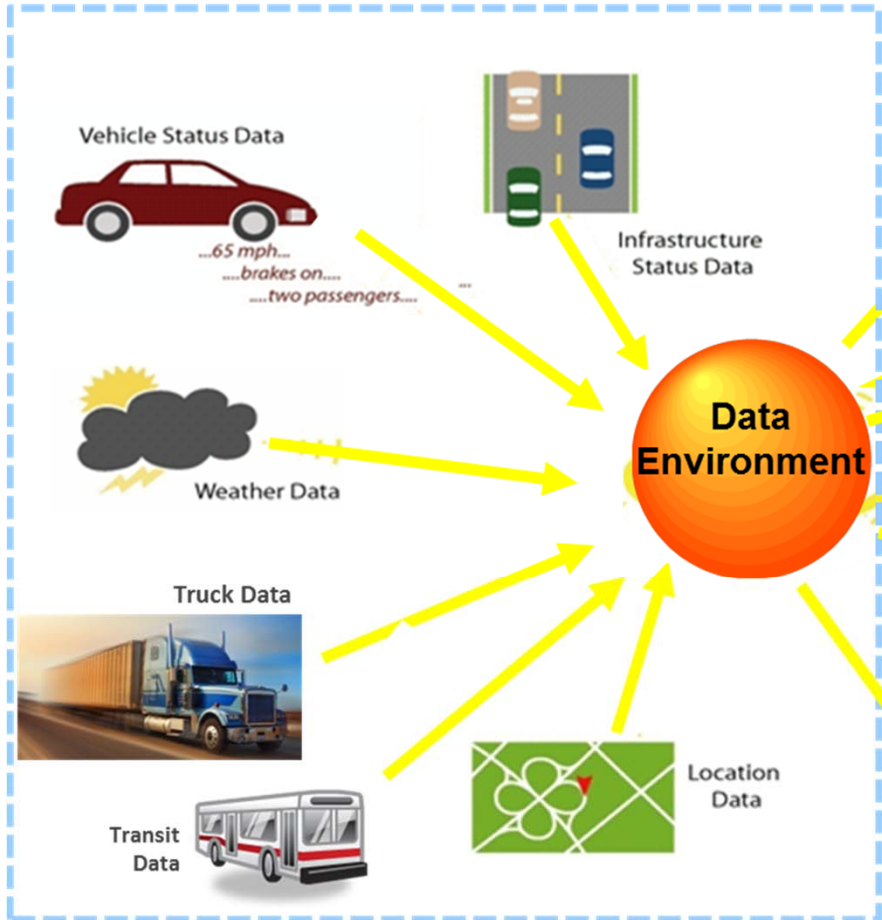


# ITS Research Program Components

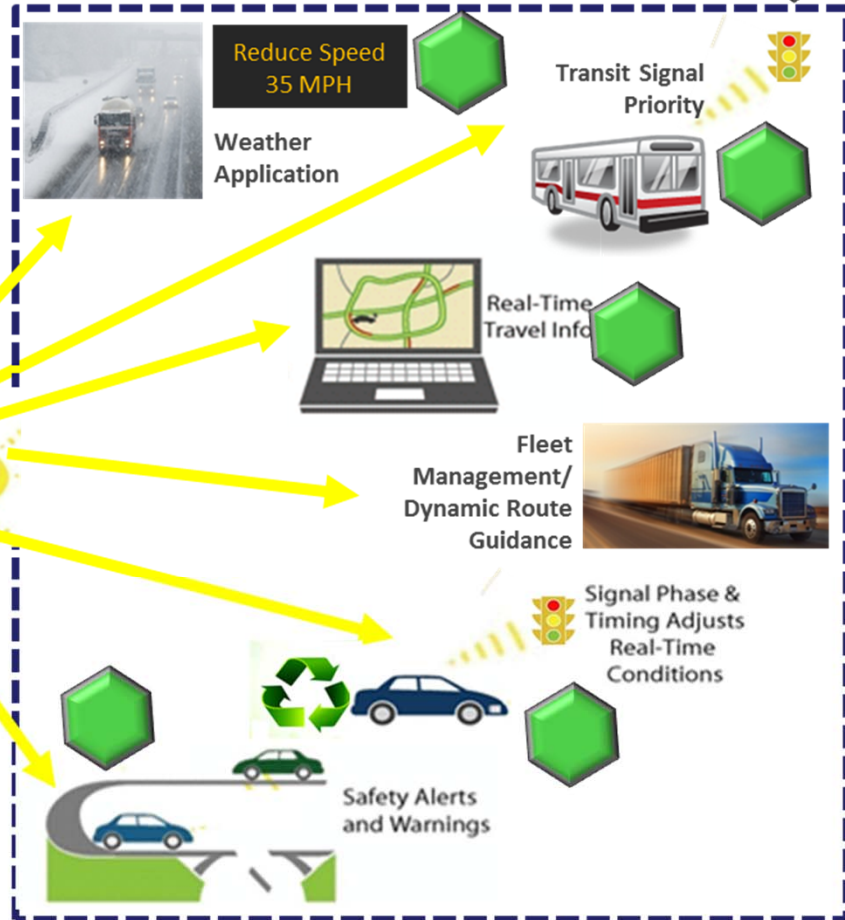


# Mobility Program

## Real-time Data Capture and Management



## Dynamic Mobility Applications



# Dynamic Mobility Applications Program

---

## Vision

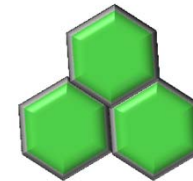
- Expedite development, testing, commercialization, and deployment of innovative mobility application
  - maximize system productivity
  - enhance mobility of individuals within the system

## Objectives

- Create applications using frequently collected and rapidly disseminated multi-source data from connected travelers, vehicles (automobiles, transit, freight) and infrastructure
- Develop and assess applications showing potential to improve nature, accuracy, precision and/or speed of dynamic decision
- Demonstrate promising applications predicted to significantly improve capability of transportation system
- Determine required infrastructure for transformative applications implementation, along with associated costs and benefits

## Project Partners

- Strong internal and external participation
  - ITS JPO, FTA, FHWA R&D, FHWA Office of Operations, FMCSA, NHTSA, FHWA Office of Safety



## Transformative Mobility Applications

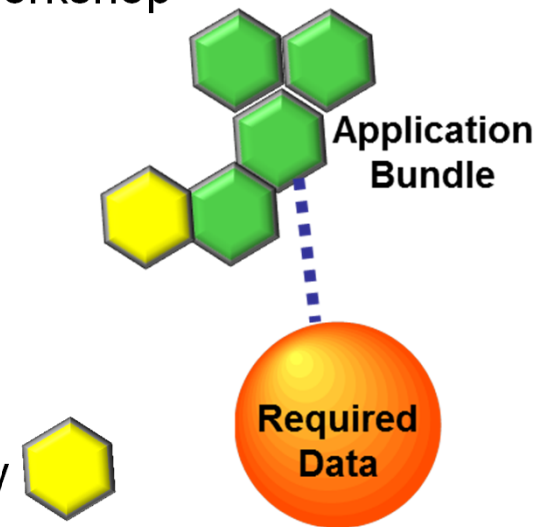
*(May have more impact when BUNDLED together)*



# Transformative Application Bundles: Bundling Rationale and Prioritization Process

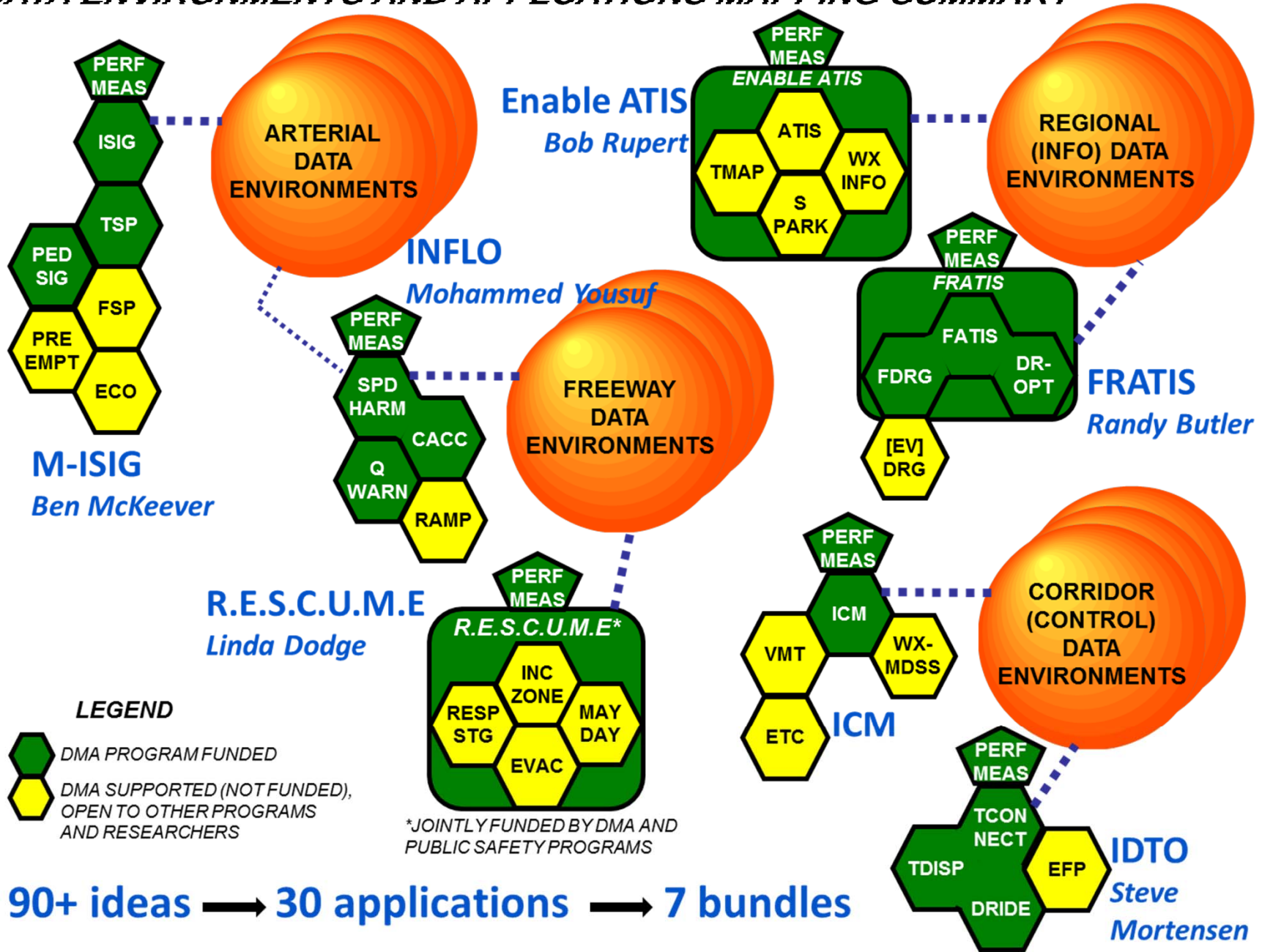
---

- Consolidate input from external stakeholder groups, workshop
- Consider internal stakeholder priorities
  - Leveraging on-going or other planned research
- **Group Applications into Bundles**
  - Similar high-level data needs
  - Interaction among applications predicted
  - Evident value in concurrent development
  - Encourage coordinated non-federal research activity
- **Bundling increases transformational impacts and reduces costs of research and development**
- Resource-constrained prioritization process based on expected value of developing application bundles, as well as individual applications
  - Applications the program cannot fund at this time are still candidates for collaborative development with other programs or stakeholders
- **High-Priority Application Bundles announced at TRB 2011**



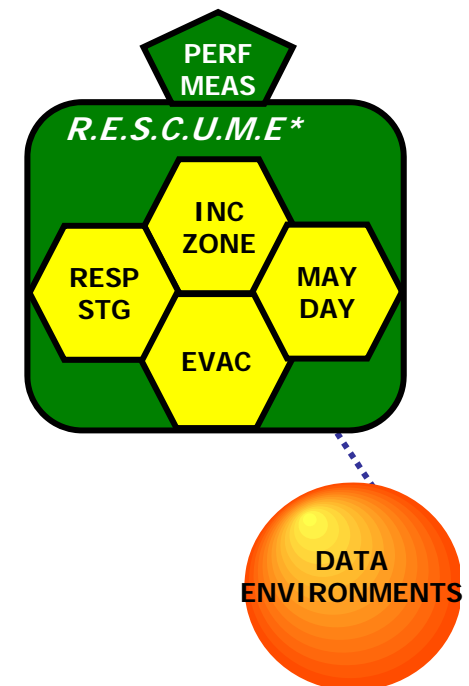


# DYNAMIC MOBILITY APPLICATIONS PROGRAM DATA ENVIRONMENTS AND APPLICATIONS MAPPING SUMMARY



# Response, Emergency Staging and Communications, Uniform Management, and Evacuation (R.E.S.C.U.M.E.)

- Advanced vehicle-to-vehicle safety messaging over DSRC to improve safety of emergency responders and travelers:
  - Emergency Communications and Evacuation (EVAC)
  - Incident Scene Pre-Arrival Staging Guidance for Emergency Responders (RESP-STG)
  - Incident Scene Work Zone Alerts for Drivers and Workers (INC-ZONE)
  - Mayday Relay (MAYDAY)



# Emergency Communication and Evacuation

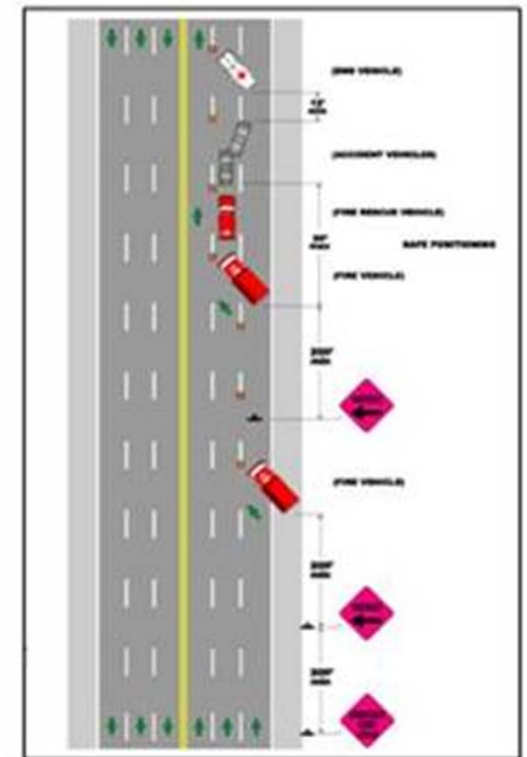
---

- Addresses the needs of two different evacuee groups:
  - Those using their own transportation
    - Dynamic route guidance information,
    - Current traffic and road conditions,
    - Location of available lodging, and
    - Location of fuel, food, water, cash machines and other necessitates
  - Those requiring assistance
    - Identify and locate people who are more likely to require guidance and assistance
    - Identifies existing service providers and other available resources



# Incident Scene Pre-Arrival Staging Guidance for Emergency Responders (RESP-STG)

- Situational awareness to public safety responders while enroute to establish safer incident work zones
- Valuable input to responder and dispatcher decisions and actions
- Range of data to responders through mobile devices to help support public safety responder vehicle routing, staging and secondary dispatch decision-making, including:
  - Staging plans
  - Satellite imagery
  - GIS data
  - Current weather data
  - Real-time modeling outputs



Source: Oconto County, WI

# Incident Scene Work Zone Alerts for Drivers and Workers (INC-ZONE)

---

- Two components
  - Alerts and warns drivers of lane closings and unsafe speeds for the temporary work zones
    - Could ultimately be augmented with the provision of merging and speed guidance to drivers.
- Warns on-scene workers of vehicles with trajectories or speeds that pose a high risk to their safety
  - Workers in the zone (e.g., law enforcement) could then be warned of the risk via an audible warning that is delivered via earpiece or some other device



Source: John Bodie

# Mayday Relay (MAYDAY)

- When an enabled vehicle is involved in a crash, this application will automatically send a mayday message. When a passing enabled vehicle receives the mayday message, it will deliver it to a roadside hot spot
- This information will then be relayed to the appropriate PSAP based on the crash location.



Source: Greg Carter Herald Sun

# R.E.S.C.U.M.E. Status and Next Steps

---

- Initiate foundational research that will lead to second phase of focused development and testing
- Engage stakeholders in the public safety and transportation communities to further develop transformative concepts and to refine data and communications need
- Development of a Concept of Operations (ConOps) and functional requirements
- Identification and assessment of key technical and non-technical issues related to field-testing the R.E.S.C.U.M.E. applications

## For More Information ...

---

### **Linda Dodge**

Chief of Staff / ITS - Public Safety Program Manager

US DOT

RITA – ITS Joint Program Office

[Linda.Dodge@dot.gov](mailto:Linda.Dodge@dot.gov)

(202) 366-8034

### **Ted Smith, PMP**

Principal

Noblis

[theodore.smith@noblis.org](mailto:theodore.smith@noblis.org)

(202) 863-3647