



# FirstNet: Our Nation's Public Safety Network

Brent Williams

Senior EMS Advisor, FirstNet Authority

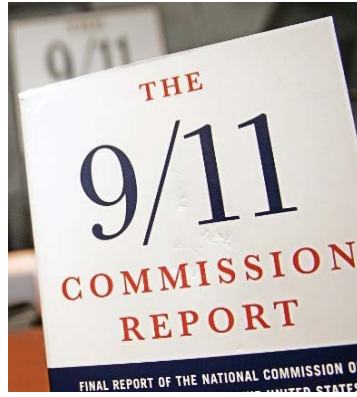
Monday July 22, 2019





**2001  
9/11 attacks**

Radio communication challenges affect first responders



**2004  
9/11 Commission**

- Recommends national radio spectrum for public safety purposes
- Public safety unites to advocate for nationwide broadband network



**2012  
The First Responder Network Authority**

Independent agency to deploy Nationwide Public Safety Broadband Network



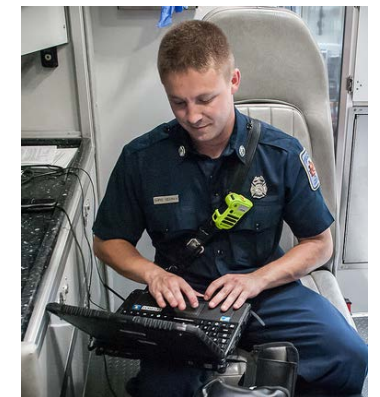
**2012-16  
Outreach and Consultation**

- Governors identify FirstNet single points of contact
- Consultation in all 56 states/territories
- FirstNet works with states to collect and validate users and coverage data



**2016-17  
Partnership and State Plans**

- Network RFP released
- Award to AT&T
- Delivery of 56 state/territory plans
- 56 Governors Opt-In decisions



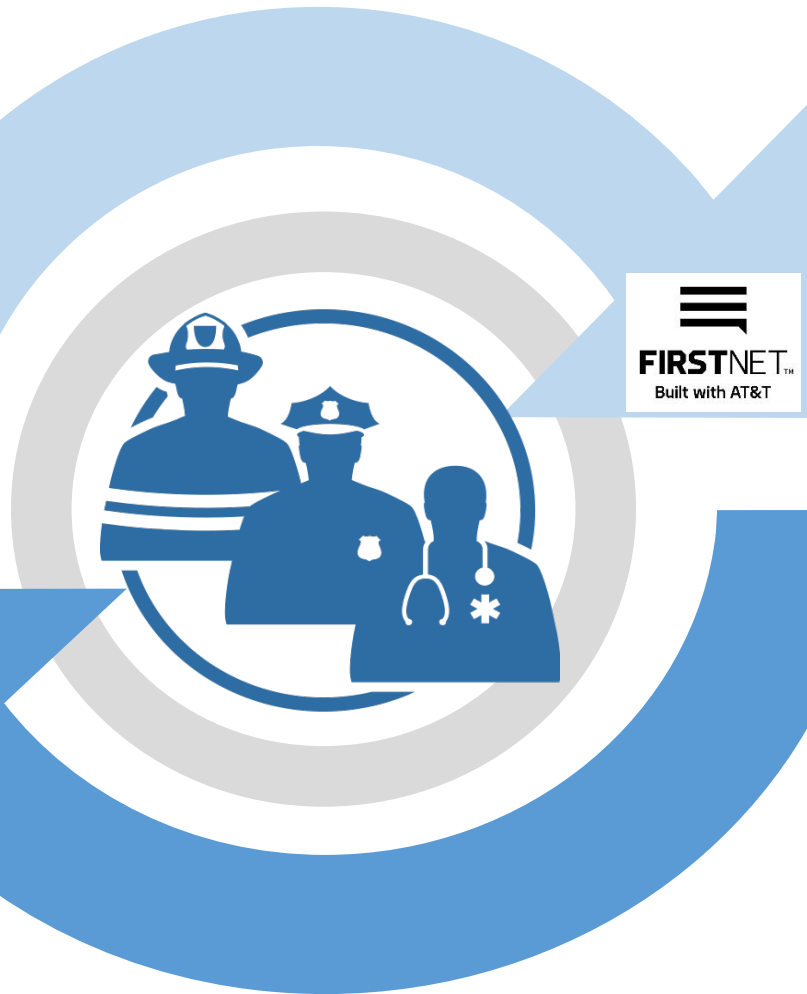
**2018-beyond  
Advancing the FirstNet Experience**

- Engage and collaborate with public safety and industry
- Develop and promote Public Safety Communications roadmap
- Invest in the network



## First Responder Network Authority

- Partner oversight and support
- Public safety advocate
- Technical expertise
- Innovation strategy and investment

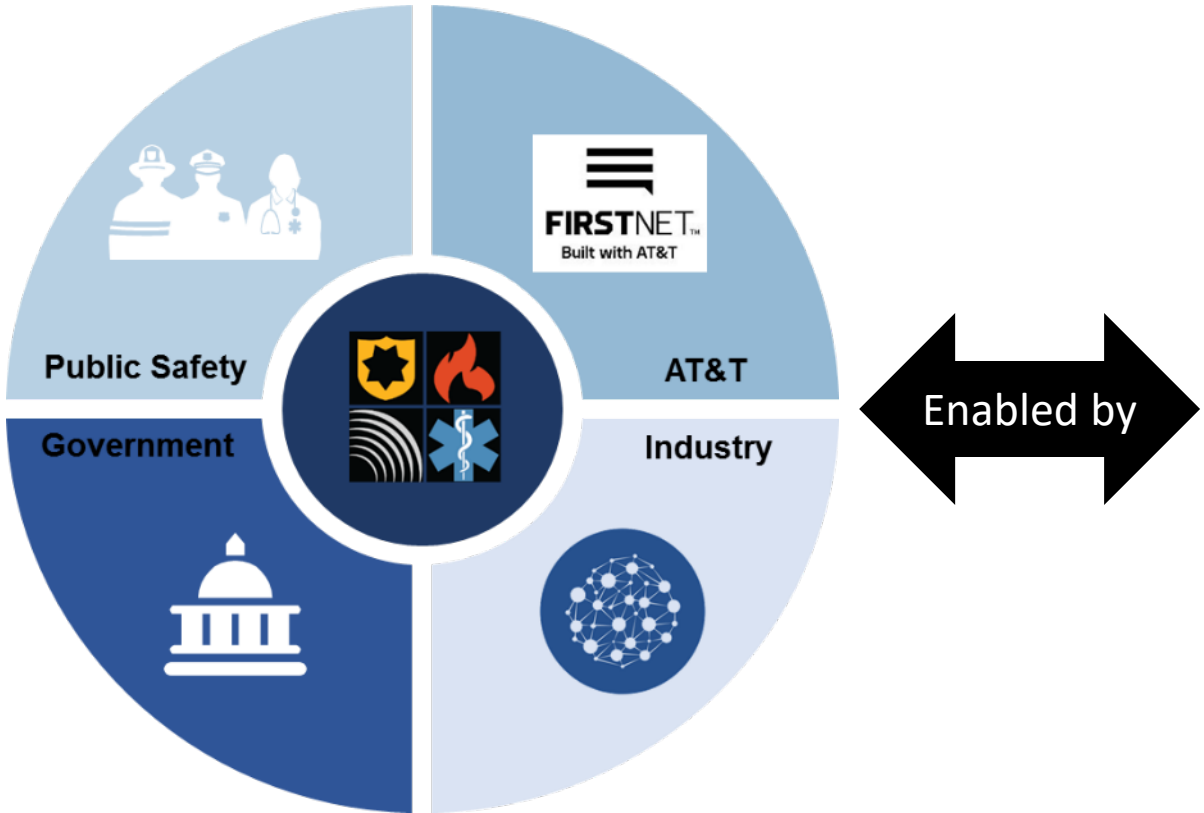


## AT&T

- Nationwide core
- RAN build-out
- Adoption and customer care (24x7x365)
- Security operations center
- Mission-critical services
- App and device ecosystems



The FirstNet Authority is in the position to be a catalyst across its stakeholder groups to effect positive change for the public safety community



- The only network dedicated to public safety
- \$18 billion reinvestment capability
- A committed organization with deep expertise

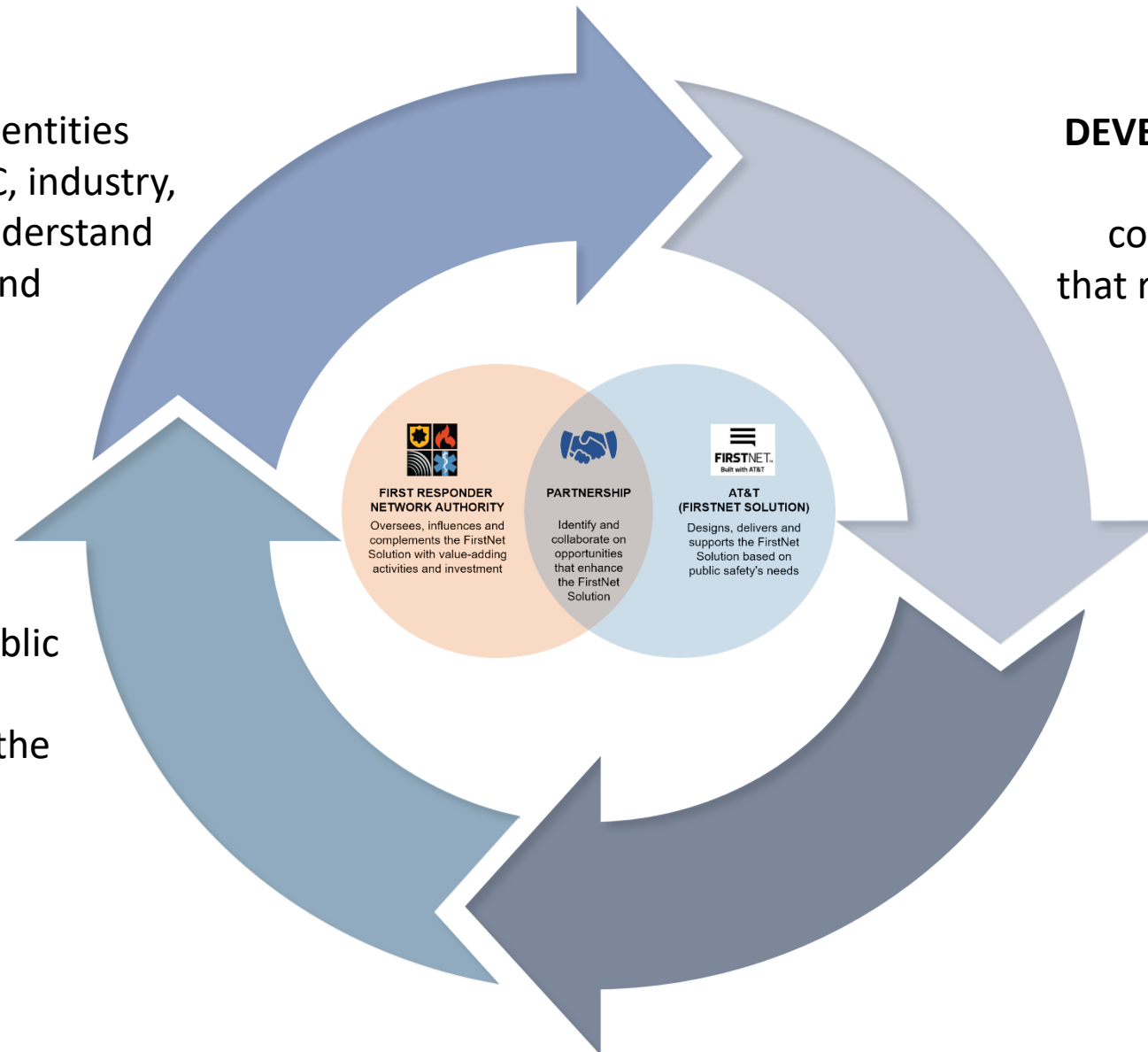


**ENGAGE** public safety entities and associations, PSAC, industry, and government to understand their trends, drivers, and priorities

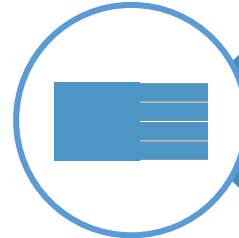
**DEVELOP** and promote public safety broadband communications roadmaps that reflect the voice of public safety

**COLLABORATE** with public safety to realize the operational benefit of the FirstNet Experience

**INVEST** in the network to further a differentiated FirstNet Experience



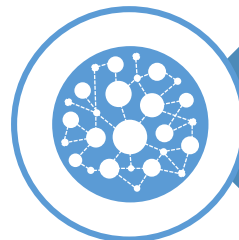
The Roadmap expresses how the FirstNet Authority will work to advance the FirstNet network over a multiyear horizon.



Provides a **technology framework** to understand all of the components and capabilities of the FirstNet Experience



Reflects **public safety's feedback** and needs based on a multitude of Roadmap engagements with the public safety community



Incorporates **analysis** of industry trends and drivers as well as AT&T's roadmap for the Network



Identifies the **priorities that will guide investments** and other opportunities based on FirstNet Authority analysis



### Core

- EPC
- IMS Core
- Services Platforms
- App Servers
- Service Enablers



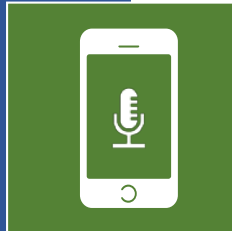
### Coverage & Capacity

- Macro Coverage
- Capacity
- In-building Solutions
- Temporary/On-Demand Coverage
- Range Extension
- Device-to-Device
- Air-to-Ground
- Maritime Operations
- Availability/Reliability/Resiliency/Hardening



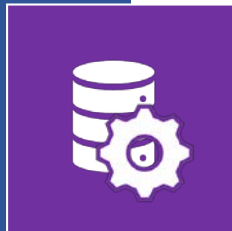
### Situational Awareness

- Location Services
- Sensors
- Wearables
- Cameras/Video
- Mapping/Geographic Information System (GIS)
- Data Analytics/Artificial Intelligence



### Voice Communications

- Mission Critical Push-to-talk (MCPTT)
- PTT Interconnection



### Secure Information Exchange

- Data Access
- Data Sharing
- Cybersecurity
- Identity, Credential and Access Management (ICAM)/Single Sign-On



### User Experience

- Priority Services
- Applications
- Devices
- Accessories
- Hands Free Operations
- Augmented Virtual Reality
- Heads-Up Display

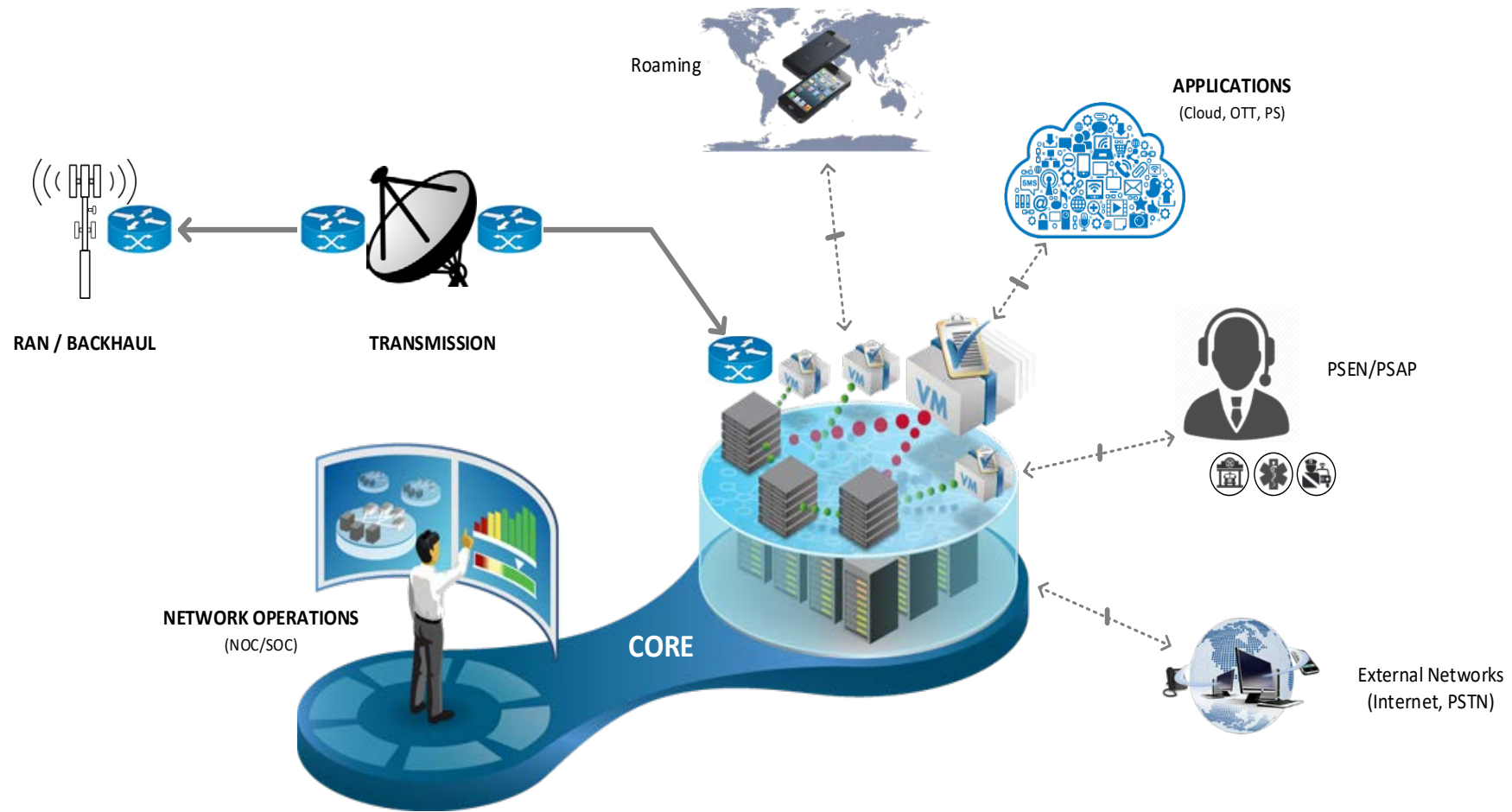


- Launched **FirstNet Core**
- **75 FirstNet-dedicated deployable assets** nationwide
- Expedited buildout of state **Radio Access Networks/Band 14**
- **Dedicated** Security Operations Center (SOC) for FirstNet subscribers
- Launched **Applications** and **Devices Ecosystem** for public safety

**7,250 public safety agencies with 600,000+ connections**







Service and QoS Priority Subscriptions



Charging Control



Basic Network Services and Mission Critical Services





- **Quality of Service (QoS):** Minimum/maximum service quality parameters
- **Priority:** Gives preferred access to network resources
- **True Preemption:** Terminates/relocates non-primary/commercial users so high-priority users have access





Q&A

