

ITS Joint Program Office

**2013 ITS Deployment Tracking Survey  
&  
ITS Asset Viewer**

August 26, 2013  
National Rural ITS Conference  
St. Cloud, MN

James Pol, PE, PMP  
Team Lead, Program Management and Evaluation

# Tracking Our Success

---

- Tracking the deployment of ITS technology for more than 15 years
- Administered approximately every 20 months
- Initially covered 78 metro areas then expanded to include 108

# 2010 Deployment Tracking Results

**RITA** Intelligent Transportation Systems  
Joint Program Office

## Deployment of ITS: A Summary of the 2010 National Survey Results

[www.its.dot.gov/index.htm](http://www.its.dot.gov/index.htm)  
Final Report — August 2011  
FHWA-JPO-11-132



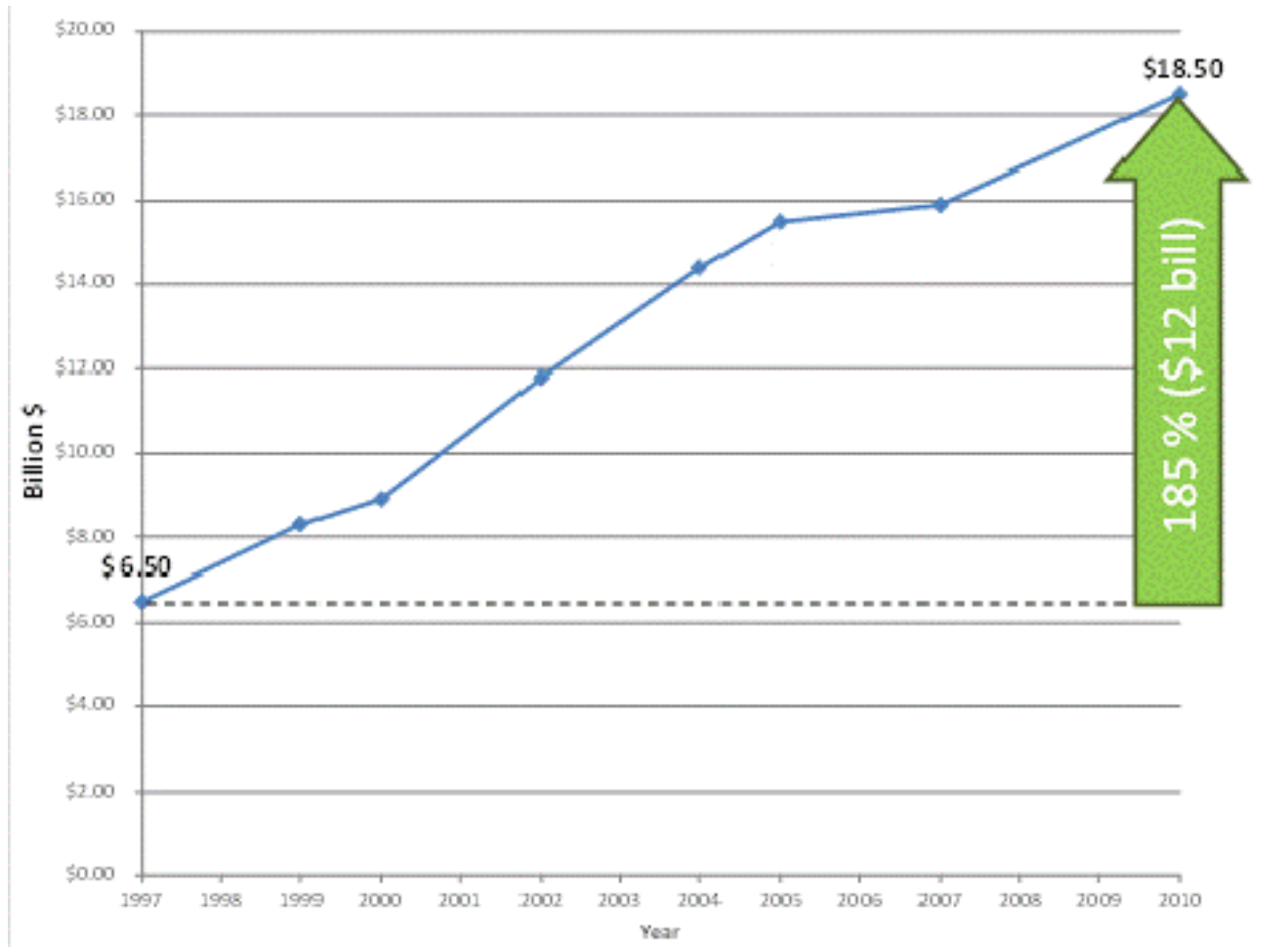
U.S. Department of Transportation  
Research and Innovative Technology  
Administration

- [www.itsdeployment.its.dot.gov](http://www.itsdeployment.its.dot.gov)
- Nearly 1,600 Public Agencies Surveyed
  - Freeway Management
  - Arterial Management
  - Transit Management
  - TMCs
  - Electronic Toll Collection
  - Public Safety – Fire Rescue
  - Public Safety – Police

# Tracking Our Success

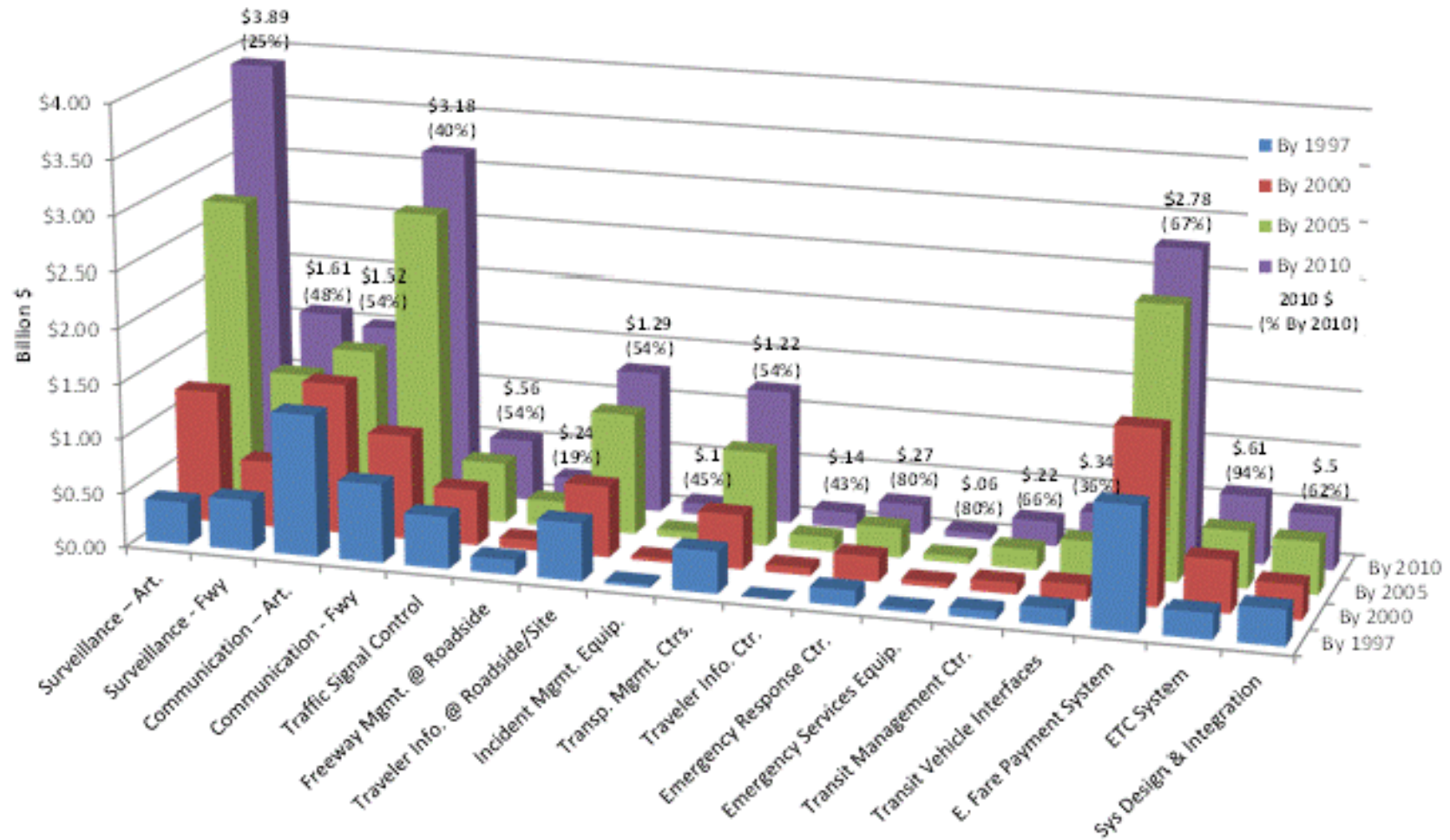
---

- Investment in ITS has nearly **tripled**



# Tracking Our Success

- Most areas within ITS grew over the years.



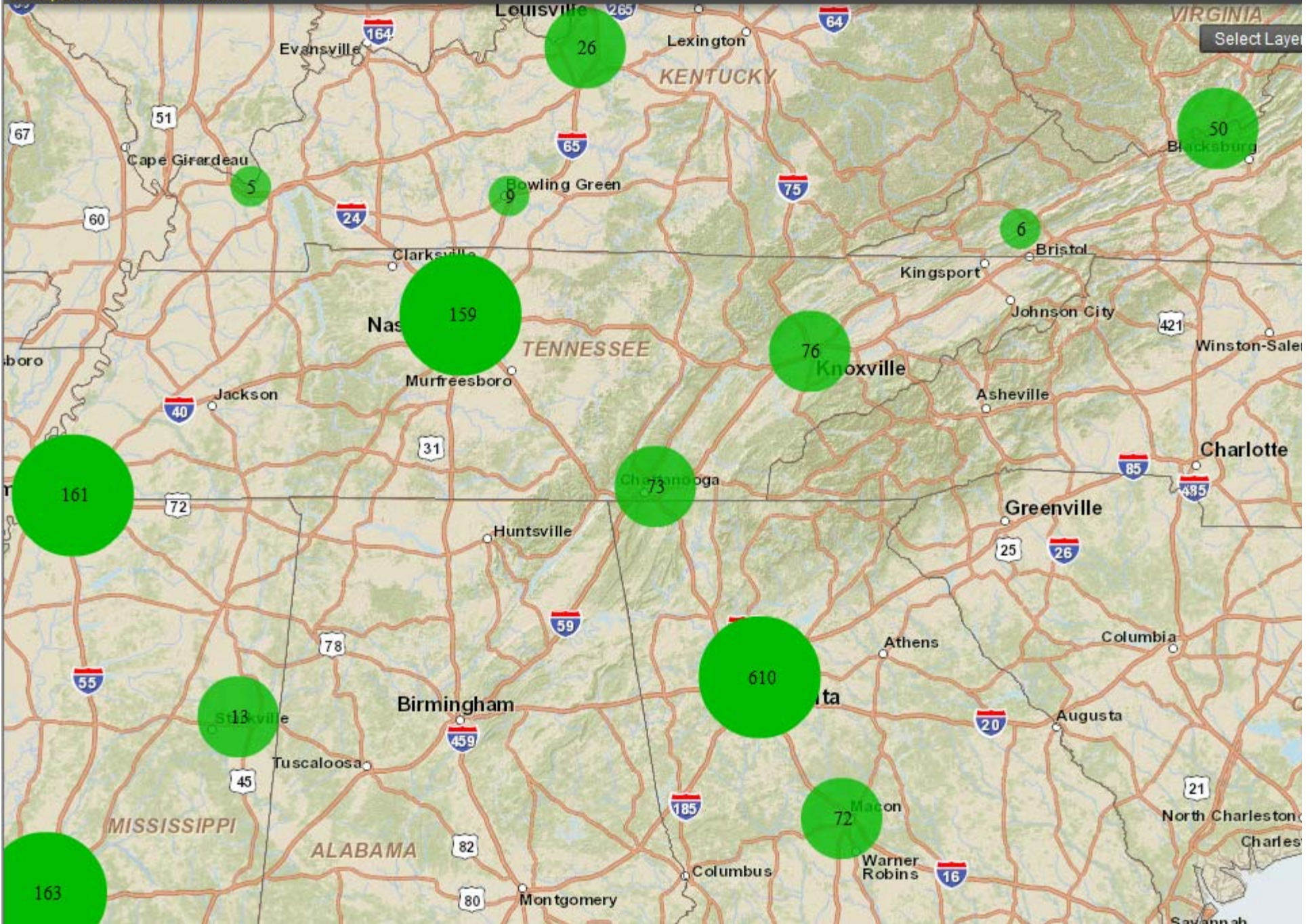
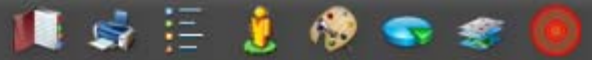
# ITS Deployment Tracking Survey

---

- Measurement of ITS Deployment throughout 108 Metropolitan areas
- Last survey conducted in 2010
- A 2013 survey is ongoing now
  
- What is missing...
  - Geographical context of ITS deployment
  - Rural locations outside the scope of the survey
  - Information about the specific ITS Assets themselves

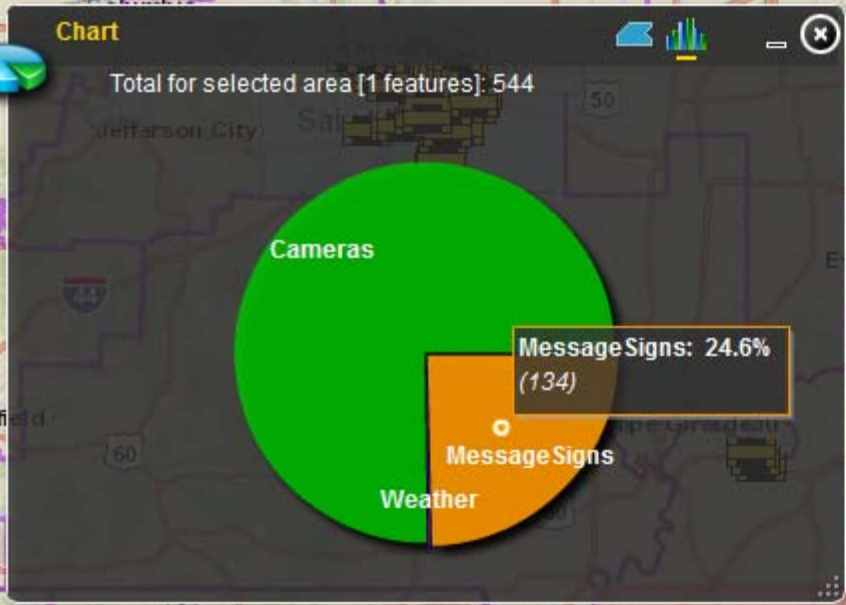
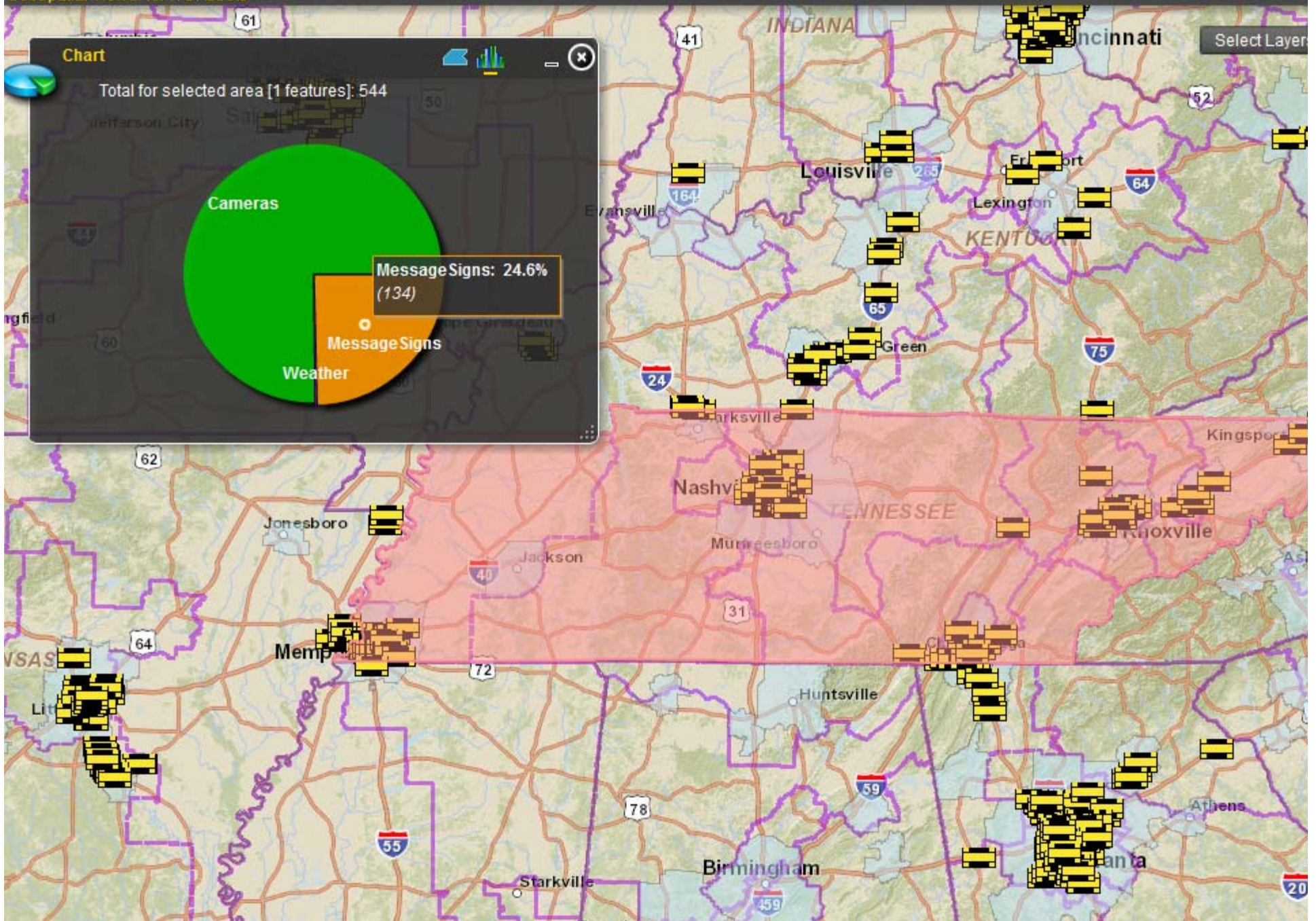
# ITS Asset Viewer

Geospatial Viewer for ITS Assets



# ITS Asset Viewer

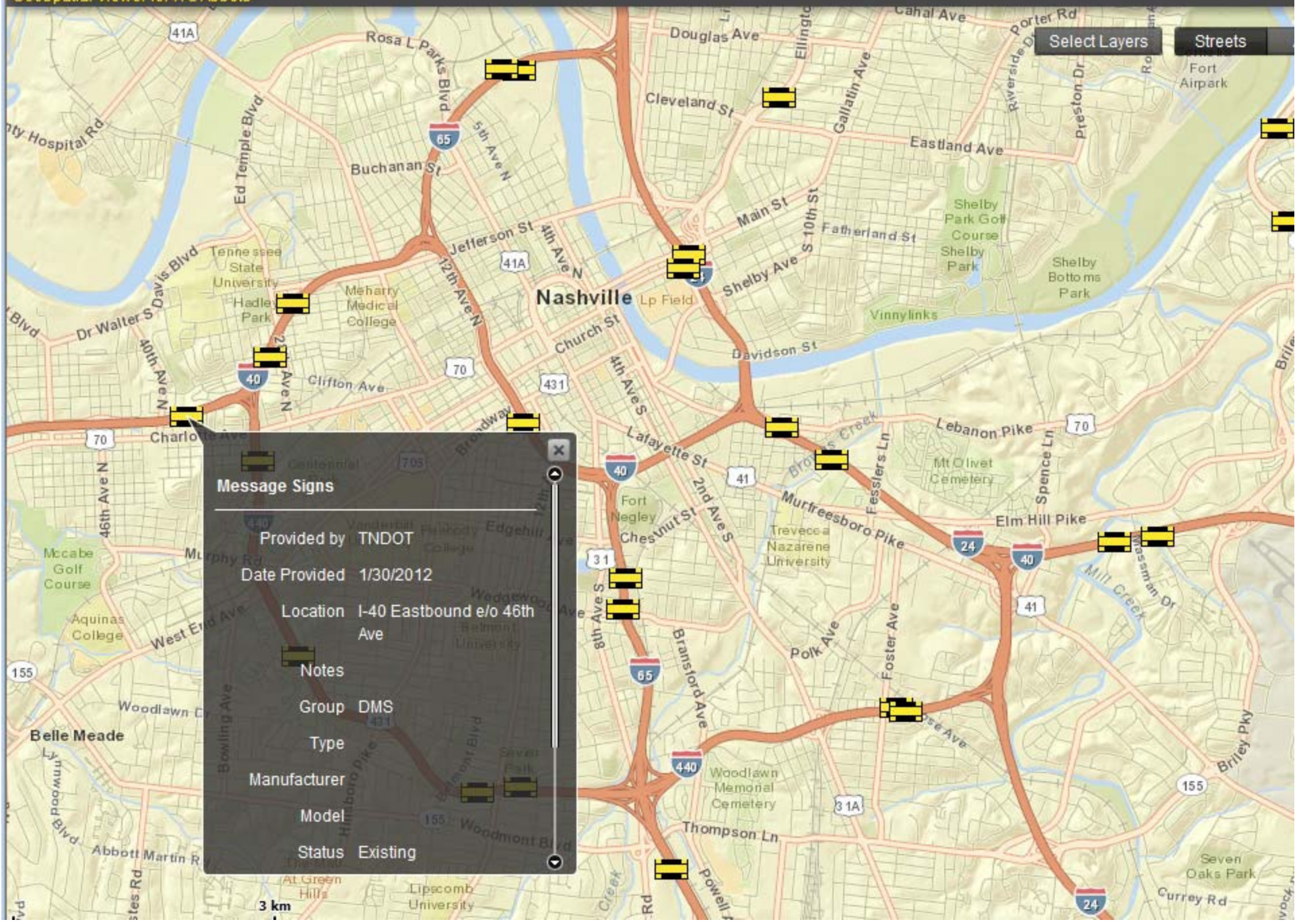
Geospatial Viewer for ITS Assets





# ITS Asset Viewer

Geospatial Viewer for ITS Assets



**Message Signs**

Provided by TNDOT

Date Provided 1/30/2012

Location I-40 Eastbound e/o 46th Ave

Notes

Group DMS

Type

Manufacturer

Model

Status Existing



# <http://itsdeployment.ornl.gov/itsassets/>

---

- Over 75,000 ITS Assets submitted in GIS format from 46 State DOTs
  - CCTV
  - Dynamic Message Signs
  - Traffic Detection
  - Traffic Control (including ramp meters, traffic signals, etc.)
  - Road Weather Information Systems
- Layered Information
  - Congressional Districts
  - Average Daily Traffic reports on the NHS from Highway Performance Monitoring System 2008 data

# For More Information

The screenshot shows the RITA website with the following elements:

- Header:** RITA logo, U.S. Department of Transportation, Research and Innovative Technology Administration, and a search bar.
- Navigation:** About, Research, Tech Transfer, Library, Press Room, Training, and Contact Us.
- Main Content:**
  - Technology Transfer:** A large image of a person pointing at a screen with text: "Visit the Technology Transfer Portal for tools, training, and resources that support your ITS deployments."
  - Procurement Opportunities:** "As we implement the ITS Research Strategic Plan, open procurements may become available through a variety of solicitations. More >>"
  - Public Meetings:** "MARK YOUR CALENDAR. The Intelligent Transportation Systems Joint Program Office (ITS JPO) has the following meetings and webinars planned. All events are free and open to the public."
  - Spotlight:** "U.S. DOT Announces Public Meeting and Webinar to Discuss Connected Vehicle Safety Program September 25-27, 2012. Read more..."
  - Our Current Research:** Applications, Mode-Specific, Cross-Cutting. Topics include Vehicle-to-Vehicle Safety, Vehicle-to-Infrastructure Safety, Real-Time Data Capture, Dynamic Mobility Applications, Environment, Road Weather, and Connected Vehicle Policy.
  - SafetyPilot:** "CONNECTED VEHICLE TECHNOLOGY" with icons for bus, car, and truck.
  - Stay Connected:** Facebook, Twitter, Email, RSS, and a Share button.

[www.ITS.DOT.GOV](http://www.ITS.DOT.GOV)

James Pol, Team Leader,  
Program Management and  
Evaluation

RITA, ITS Joint Program Office  
(JPO)

James.Pol@dot.gov

