

ASTI Communicator

Welcome Pete Krikelis

Select your user status

Normal

Users Online

- TOC.North@dot.state.nj.us
- HanView1@VDOT.Virginia.gov
- jtg@pkfm.com
- Kelly.McVeigh@dot.state.nj.us

Messages

mdarcy@dot.state.nh.us Has Connected!

Connected!

Travel Time

Eastbound
Click the following icons on the map to display travel time to Clearwater

tt17 tt24

Westbound
Click the following icon on the map to display travel time to St. Augusta

tt94w22

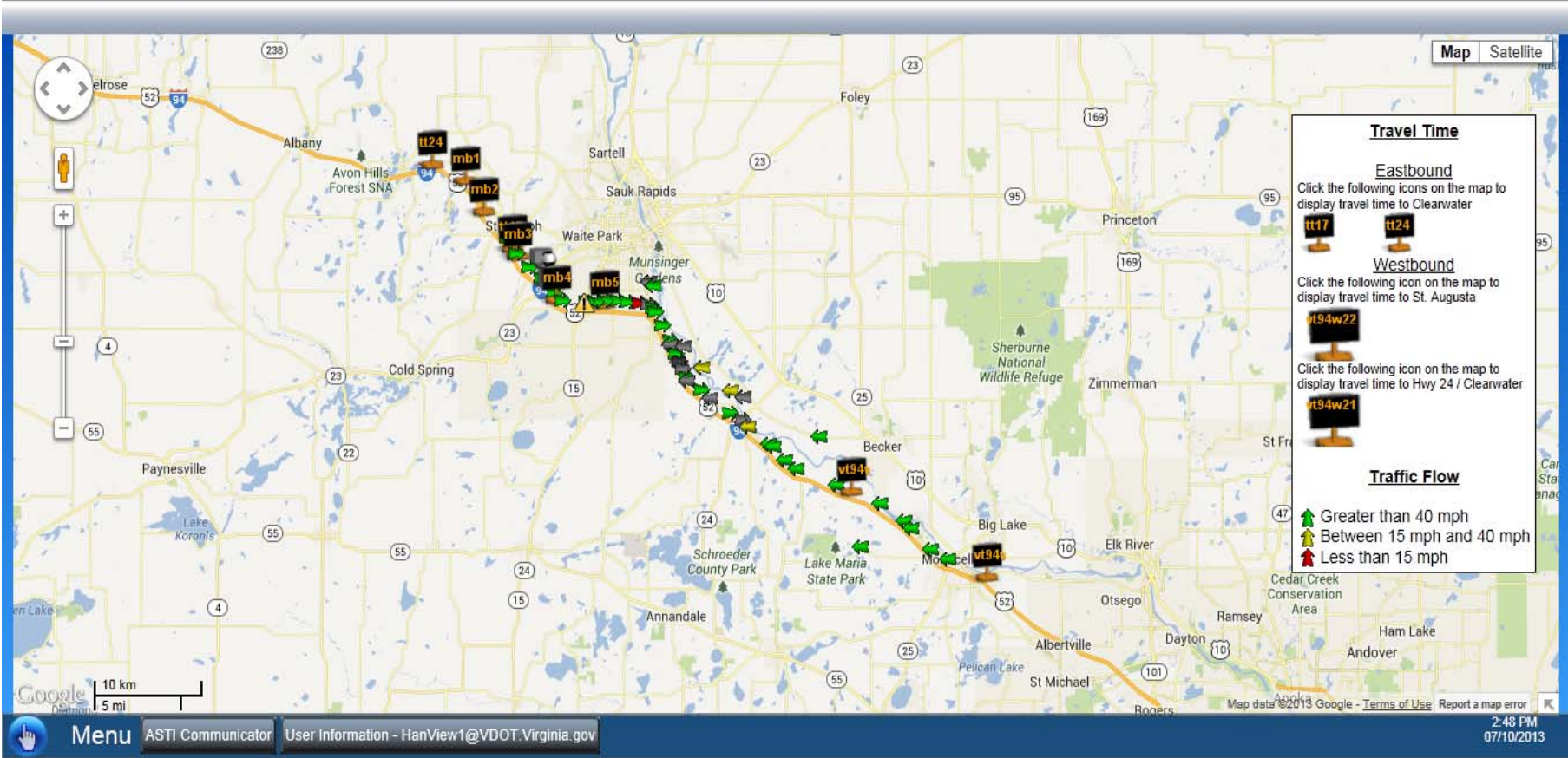
Click the following icon on the map to display travel time to Hwy 24 / Clearwater

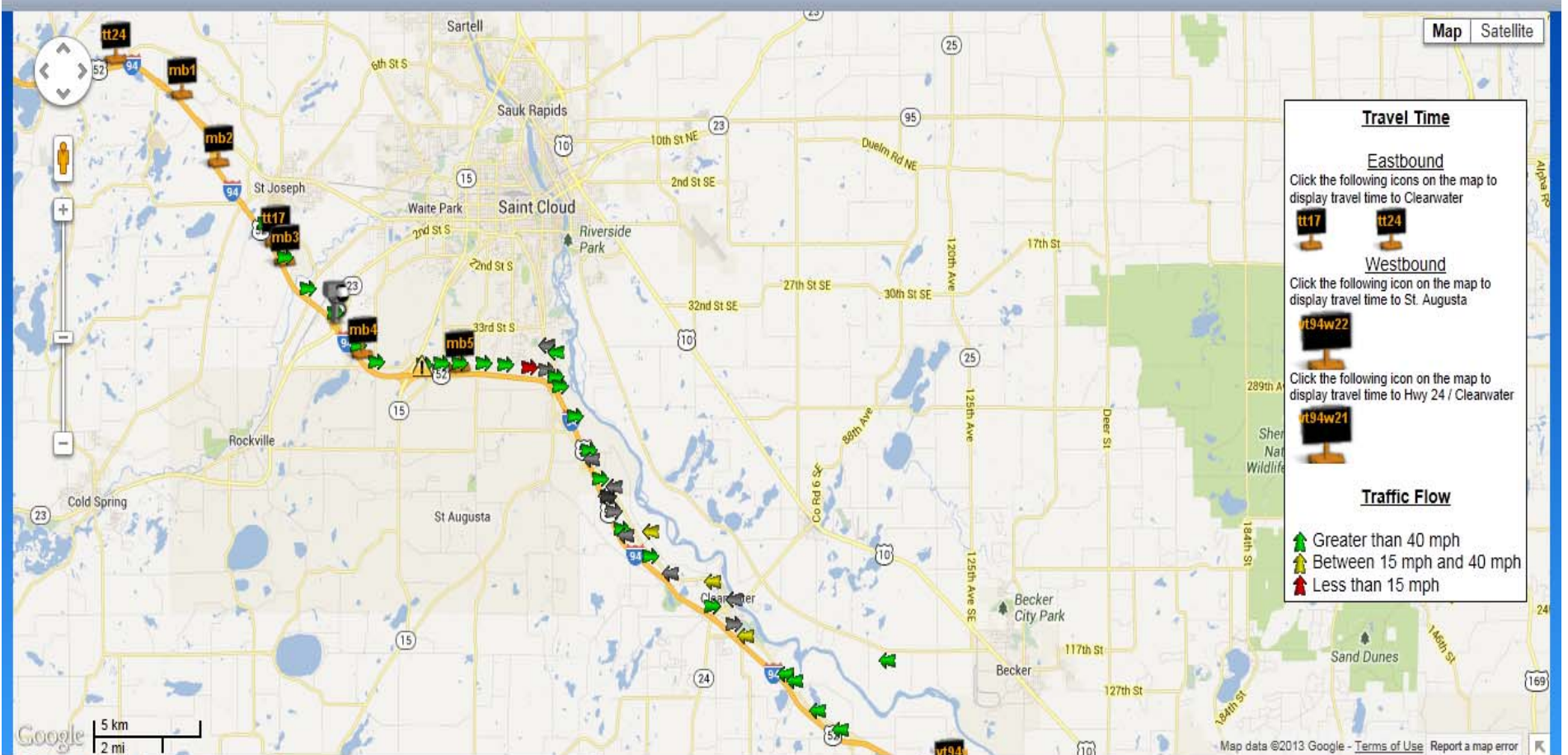
tt94w21

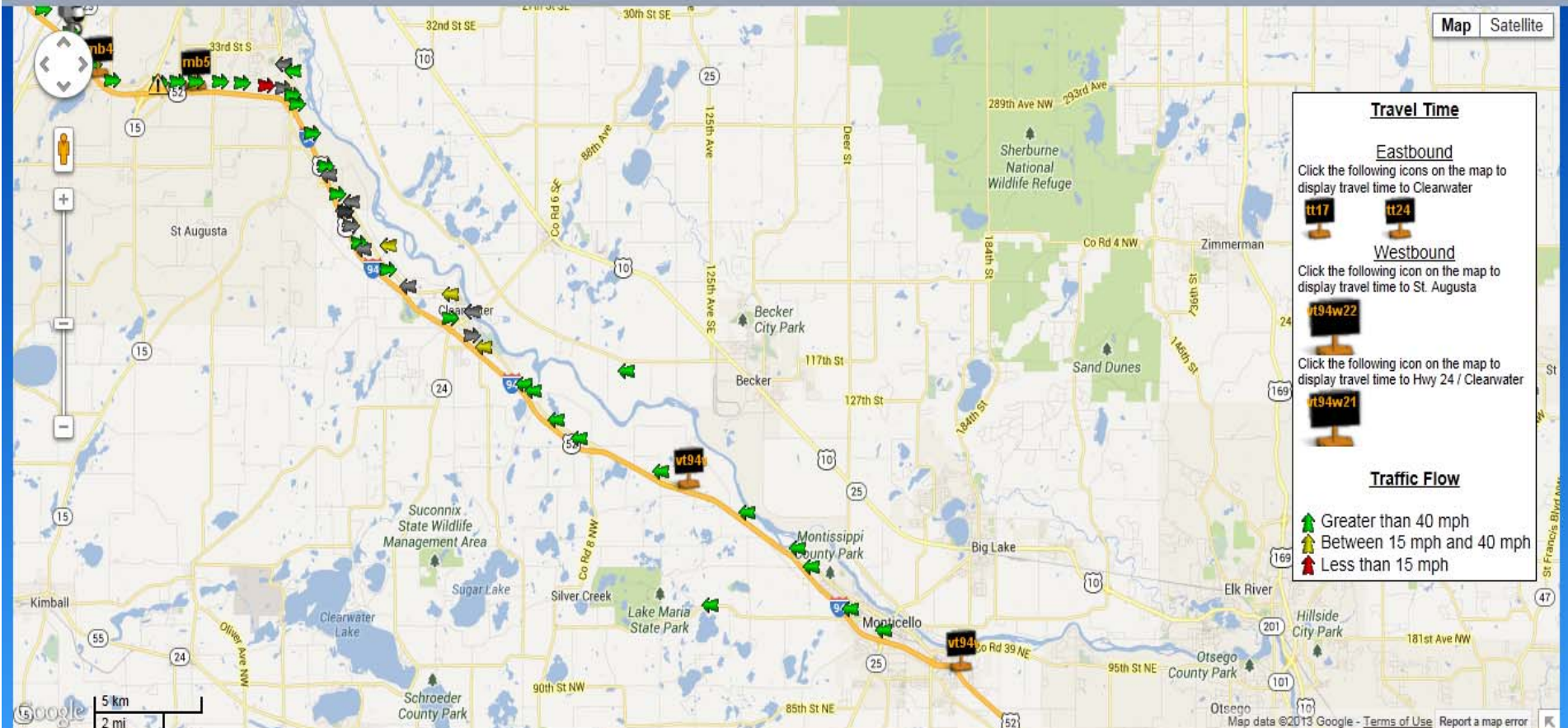
Traffic Flow

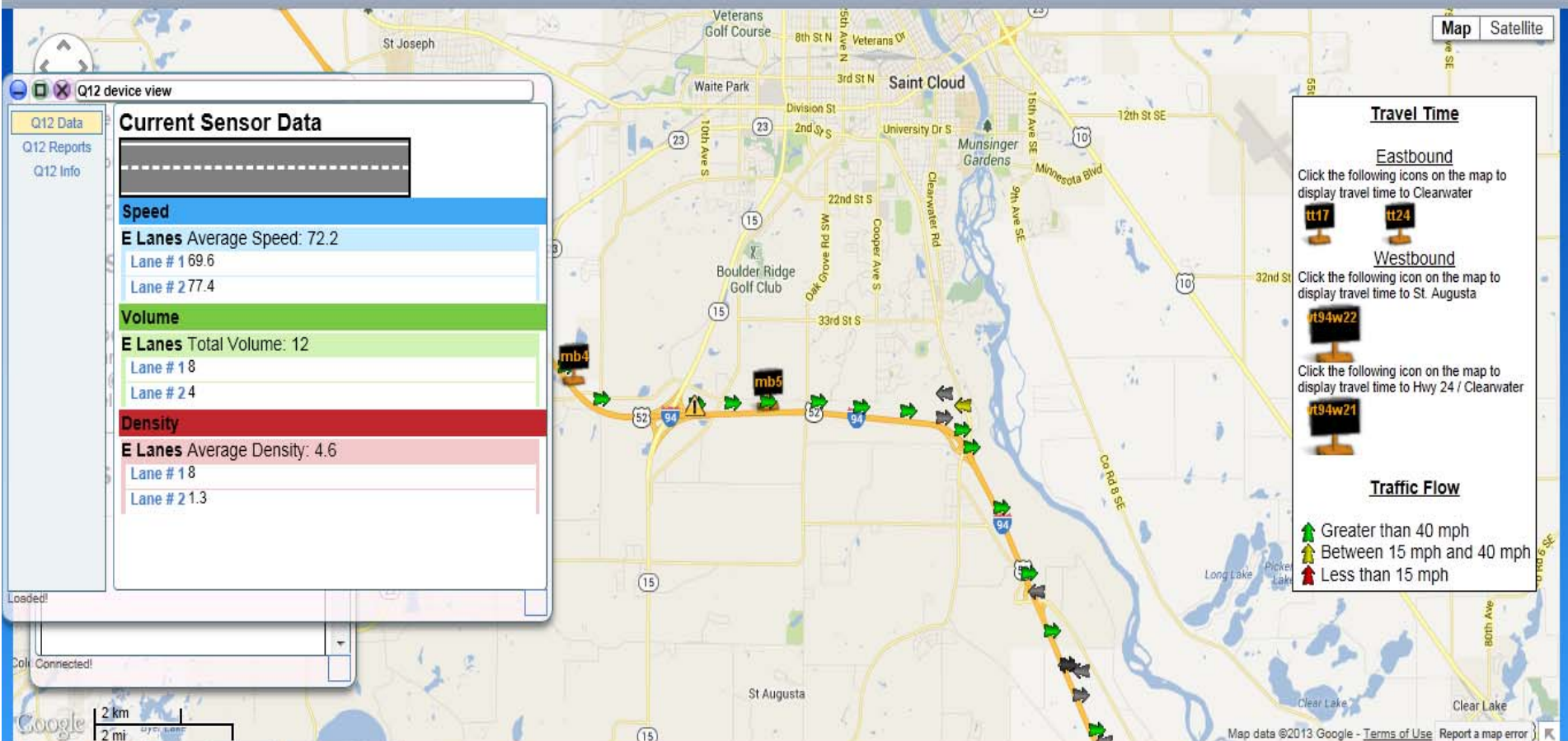
- Greater than 40 mph
- Between 15 mph and 40 mph
- Less than 15 mph

Downloading User Projects









Travel Time

Eastbound
Click the following icons on the map to display travel time to Clearwater
tt17 tt24

Westbound
Click the following icon on the map to display travel time to St. Augusta
rt94w22

Click the following icon on the map to display travel time to Hwy 24 / Clearwater
rt94w21

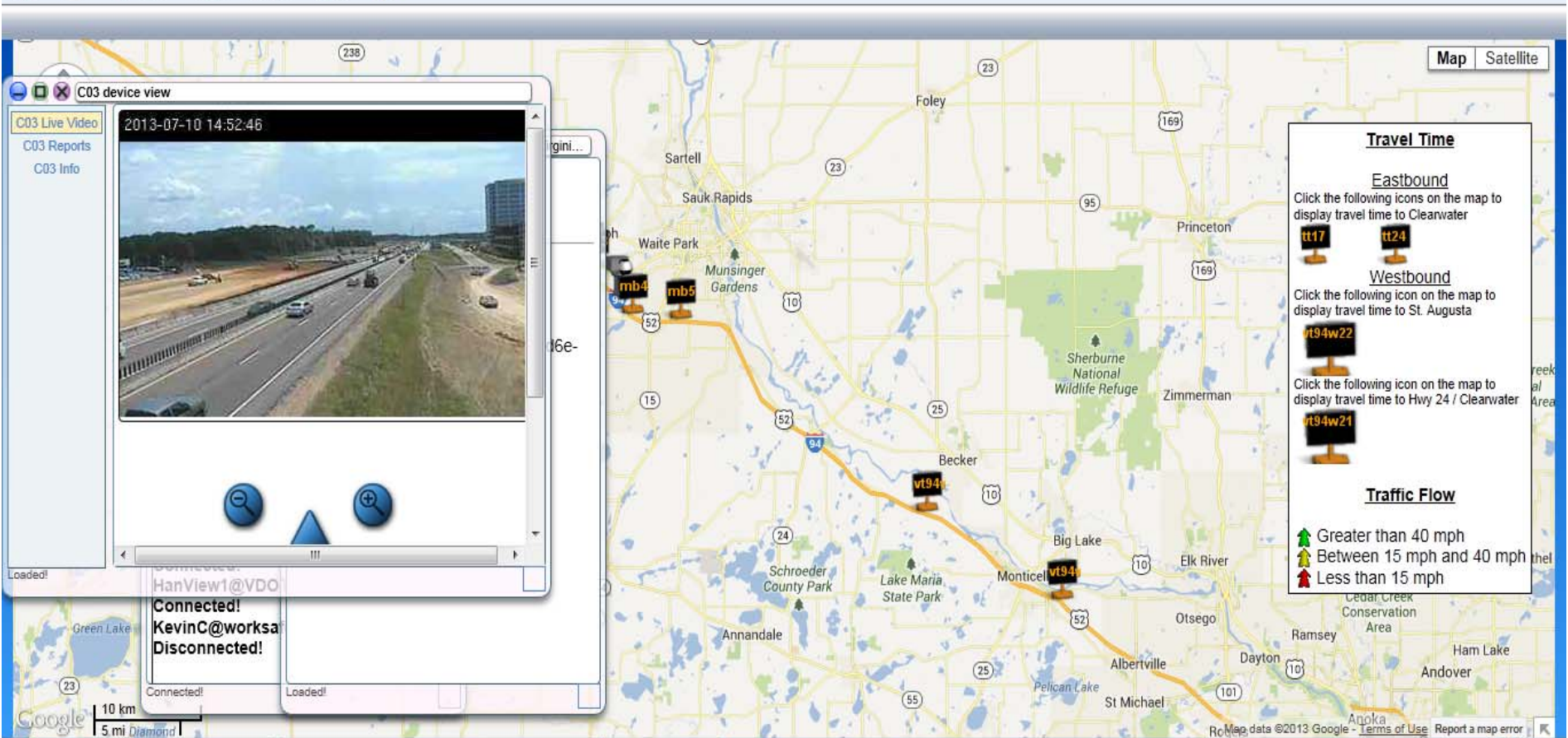
Traffic Flow

- Greater than 40 mph
- Between 15 mph and 40 mph
- Less than 15 mph

Messages

mdarcy@dot.state.nh.us Has Connected!

Connected!



C03 device view

C03 Live Video
C03 Reports
C03 Info

2013-07-10 14:52:46

Map navigation controls: zoom in, zoom out, pan.

Connected! HanView1@VDO
Connected! KevinC@works
Disconnected!

Q02 device view

Q02 Data
Q02 Reports
 Q02 Info

Select report criteria

Group data interval (in mins): 1

Last Hour
 Today
 Custom

Click 'Next' to review report

Next

Travel Time

Eastbound
 Click the following icons on the map to display travel time to Clearwater

tt17 **tt24**

Westbound
 Click the following icon on the map to display travel time to St. Augusta

vt94w22

Click the following icon on the map to display travel time to Hwy 24 / Clearwater

vt94w21

Traffic Flow

Greater than 40 mph
 Between 15 mph and 40 mph
 Less than 15 mph

Menu ASTI Communicator User In on - HanView1@VDOT.Virginia.gov Q02 device view 2:52 PM 07/10/2013