

# Regional Transportation Management

National Rural ITS Conference

August 29, 2011

**SRTMC**

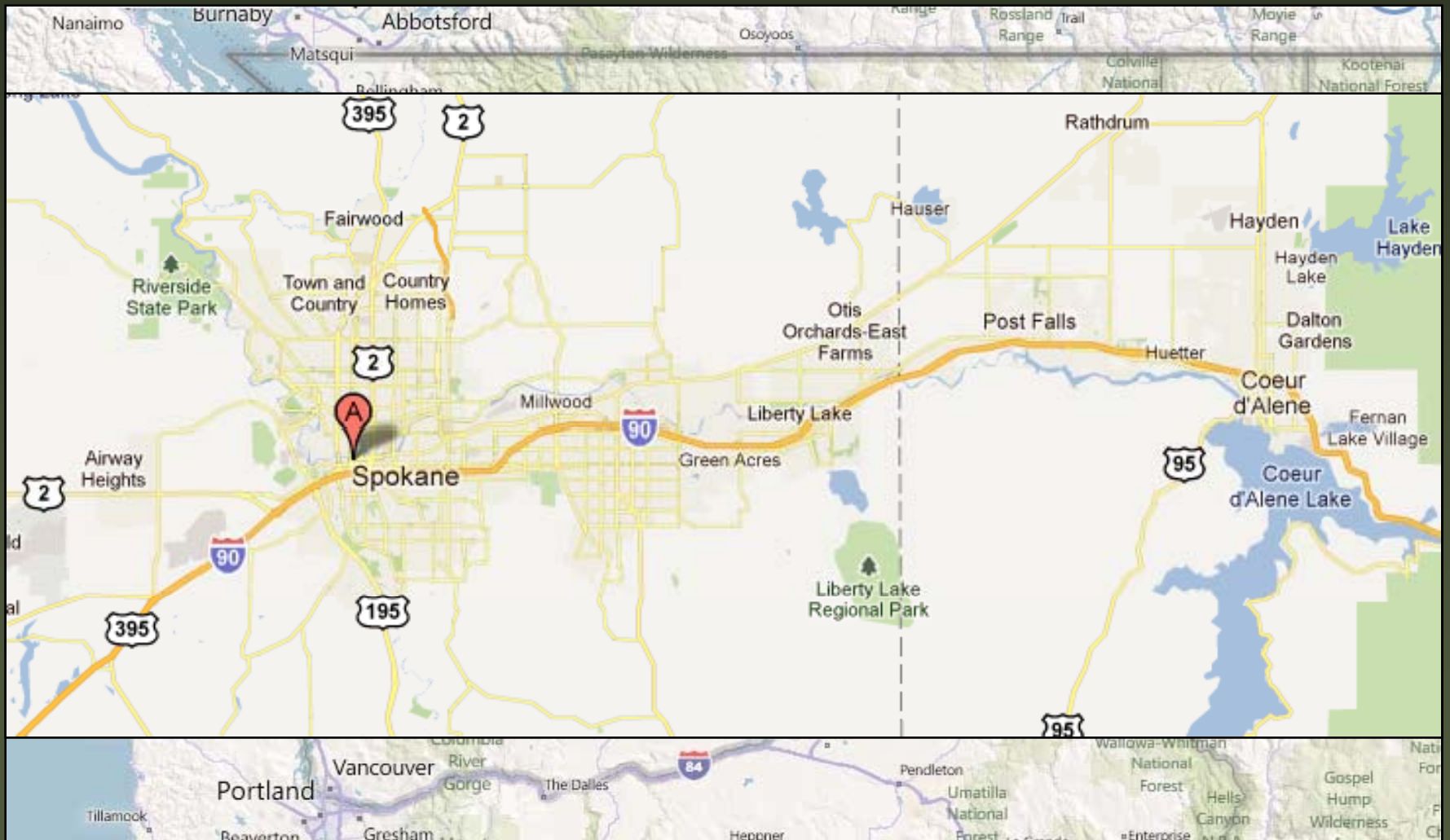
SPOKANE'S REGIONAL TRANSPORTATION MANAGEMENT CENTER



# Overview

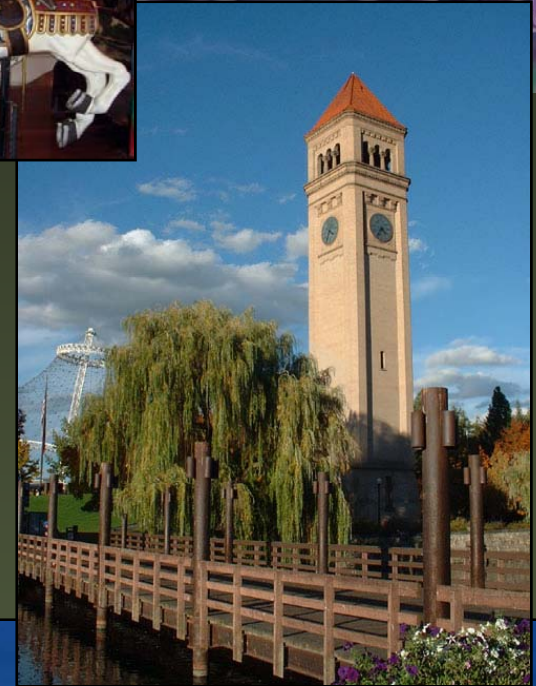
- History of SRTMC
- Services SRTMC provides
  - Highlight a few ‘in house’ developed tools
- Future SRTMC direction(s)
- Challenges of regional transportation management
- Open discussion
- Tour

# Spokane Region



# A little trivia . . .

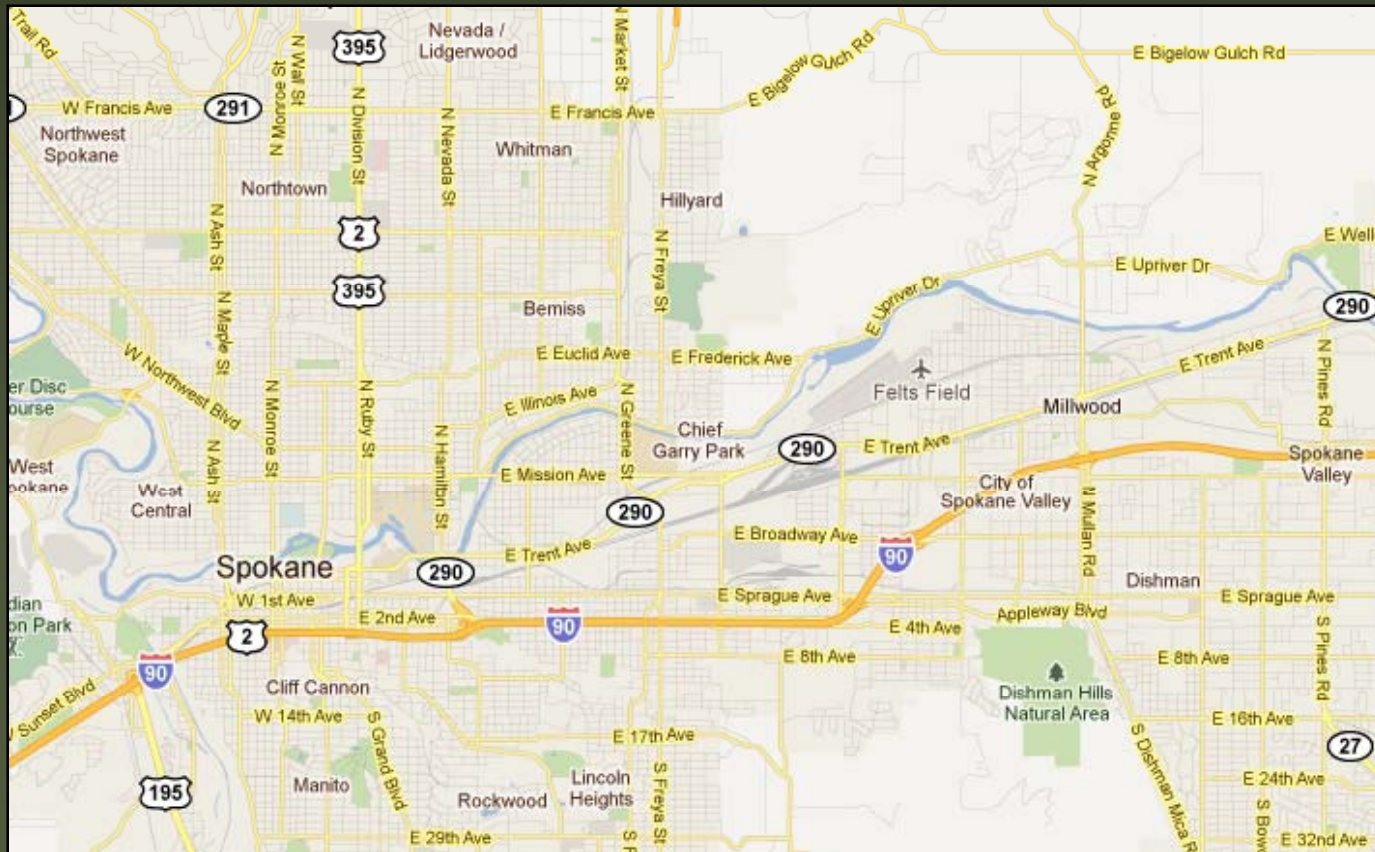
- “Children of the sun”
- Lilac City
- Hosted 1974 World’s Fair
- Hoopfest and Bloomsday
- Birthplace of “Father’s Day”





# Regional Transportation

- Vehicle
- Freight
- Pedestrian
- Transit
- Bike



# How did SRTMC come to be?



- No longer could rely solely on expanding roads
- I-90 traffic flow & interaction with local arterials
- Limited coordination due to differing equipment and lack of an interagency network

# SRTMC Vision

A joint effort between local agencies to maximize efficiency and safety of existing and future transportation infrastructures thru ITS applications



**SRTMC**

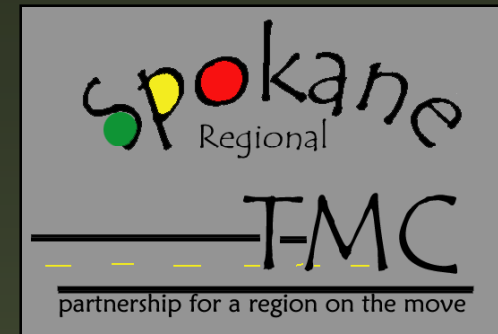
SPOKANE'S REGIONAL TRANSPORTATION MANAGEMENT CENTER



# SRTMC History

1993

Need Identified in the Spokane Area Traffic Management Plan



1998

Interlocal Agreement signed  
Operating Board established



2002

SRTMC began operations





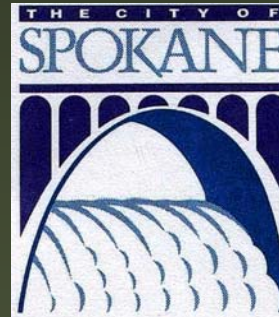
# SRTMC Members

## Original Members

- City of Spokane
- Spokane County
- Spokane Transit Authority
- Spokane Regional Transportation Council
- Washington State DOT Eastern Region

## Added Member

- City of Spokane Valley



# Operations Board

- Perform the functions of the TMC for the jurisdictional area
- Prepare, update and implement regional planning
  - ITS Architecture Plan, ITS Implementation Plan, Work Plan
- Administer regional transportation projects and programs related to operations of TMC
- Collect and maintain transportation related databases for reporting and integration into the regional transportation system
- Integrate transportation operations
- Determine budgeting of expenditures

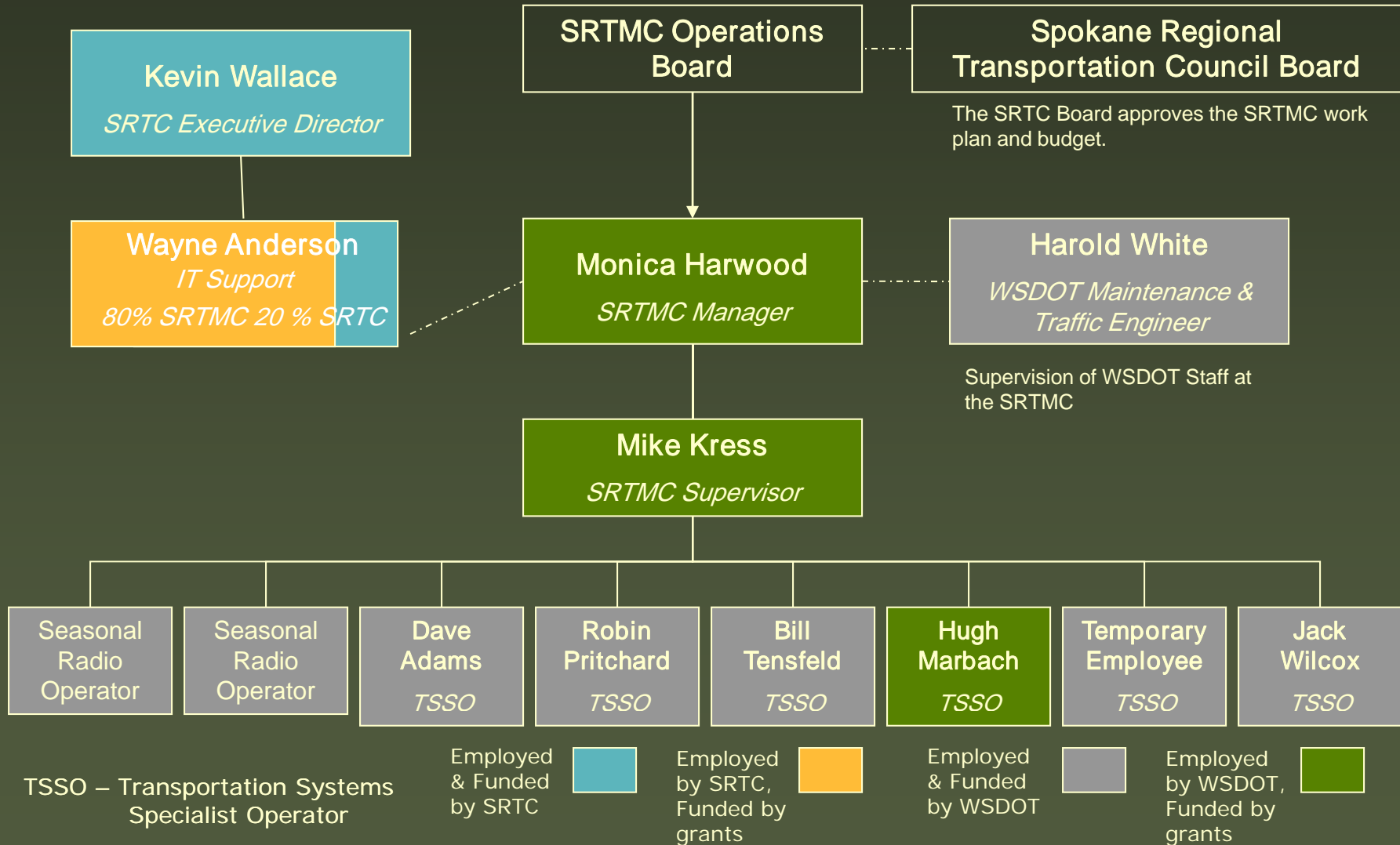
*“shall be divided among the Membership as determined by the Operating Board and as agreed to by the Member and SRTC Board.”*

**SRTMC**

SPOKANE'S REGIONAL TRANSPORTATION MANAGEMENT CENTER

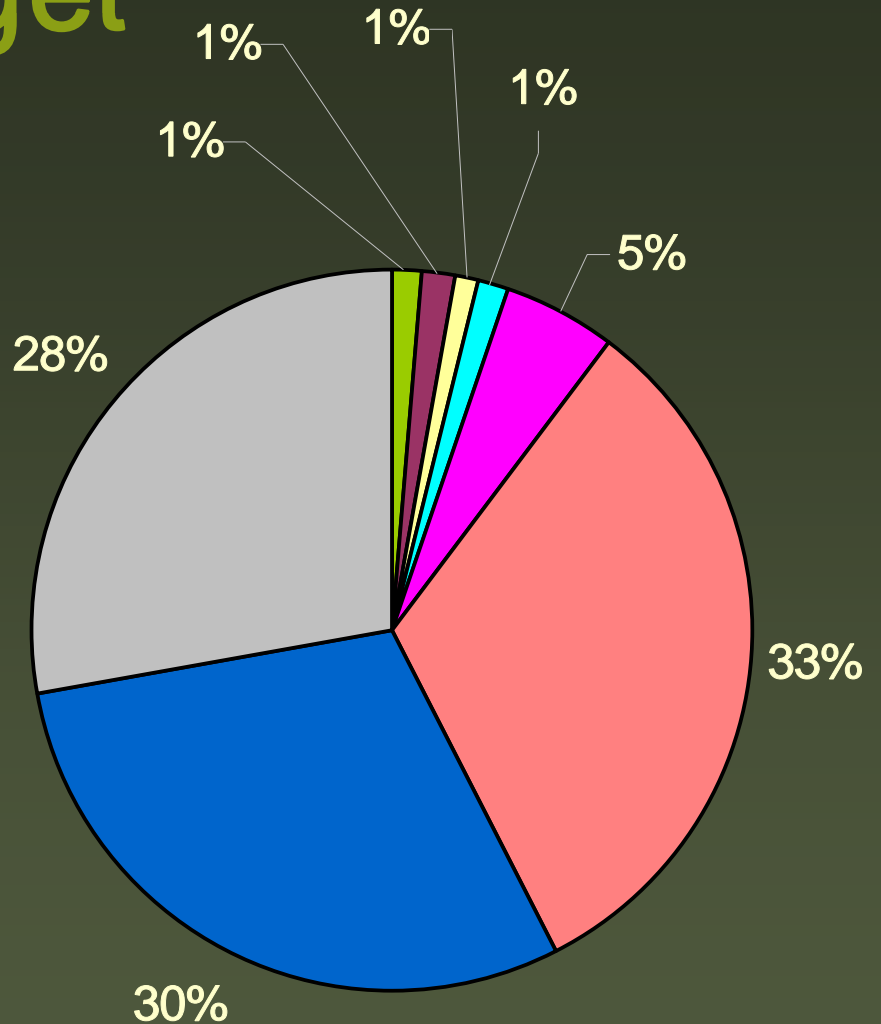


# Organization Chart



# Operating Budget

- City of Spokane Valley
- City of Spokane
- Spokane County
- STA
- SRTC
- WSDOT
- Grant - Labor
- Grant - Equipment





# Existing Regional ITS

- Fiber
- Cameras
- VMS
- HAR
- Beacons
- RWIS
- Signal Operations
- Traffic Sensors
- Pedestrian heaters

# Existing Services

- Monitor traffic
- Coordination
  - Maintenance
  - IRT
  - Law enforcement
- Radio communications
- Radio Log
- Traveler information:
  - Websites
  - 511
  - Media
  - Email and texts
  - Twitter
- Limited public contact



# Highlighted Application: Radio Log

- Interactive web based application
- Developed and maintained internally
  - WSDOT IT staff
  - WSDOT regions
- Allows TMC operators to record events and incident (facts)
- Records are viewable by all employees
  - Management, operations, other TMCs

# Highlighted Application: Radio Log

- Used for historical statistics and data
- Legal record and subject to public disclosure
- Standardized information input but allows for regional variations
- More than one operator can enter at a time
- Stored locally with scheduled updates



# Highlighted Application: Crew Manager

- Provides one central source for employee information
  - Office, organization, crew, emergency contact information, certifications
- Searchable database with standardized reports
- Can be used as an 'In/Out Board'

# Highlighted Application: Work Zone Database

- Tool for scheduling and reporting construction and maintenance activity along state highways
- Designed to include information on all WSDOT construction and maintenance activities, and work by utility companies, private developers and local agencies

# Highlighted Application: Work Zone Database

TMC staff use the WZDB for :

- Situational awareness  
(review of preplanned work activity)
- Emergency contact information

Communications (PIOs) use WZDB for:

- Weekly construction and traffic updates which are posted to web and media

# Highlighted Application: Work Zone Database

Maintenance and PE offices use WZDB for:

- Combine multiple work zone activities and avoid potential conflicts
- Search information for specific needs
  - Oversize load restrictions
  - Detour routes
  - Requested use of ITS devices

Users can be alerted of changes to scheduled work activities.



# Future Direction(s)

- Increased services
  - Arterial monitoring
  - Adaptive signal
  - Transit ITS
- ITS Equipment
  - Arterial cameras, VMS, traffic data
  - Traveler information
  - Ramp metering
- Shift to real time traffic management
  - ‘On the fly’
  - Expand staff
- Other members
  - ITD
  - Other local agencies

# Benefits of Regional TMC

- As a traveler
- Shared infrastructure
- Encourages (or forces) coordination
- Increased funding opportunities

# Challenges of Regional TMC

- Logistics
- Maintenance/Replacement of Infrastructure
- Delineation
- Politics

**SRTMC**

SPOKANE'S REGIONAL TRANSPORTATION MANAGEMENT CENTER



# Other challenges

- Keeping up with technology
- Where does ITS end and IT begin?
- Balancing installation of equipment and operations

# Open Discussion

**SRTMC**

SPOKANE'S REGIONAL TRANSPORTATION MANAGEMENT CENTER

