

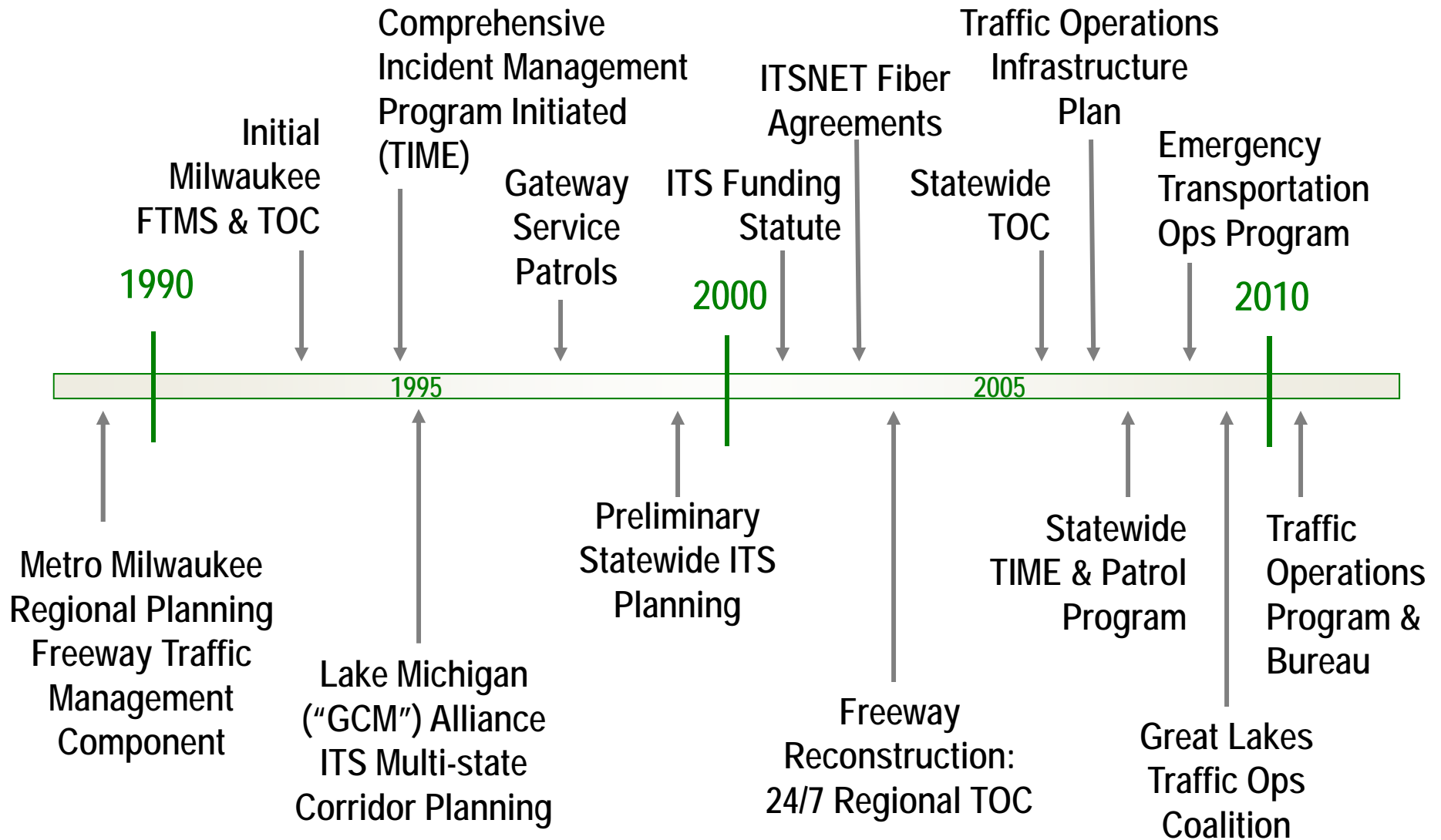


**Traffic Incident  
Management Programs:  
*State & Regional  
Foundations for National  
Success in Operations***

# Overview

- TIM Programs:  
A Wisconsin Experience & Context
- National Directions in TIM
- Next Generation TIM

# Wisconsin Traffic Incident Management Enhancement (TIME) Program



# Traffic Operations Program

---

- **Mission:** Reliable, predictable and safe movement of people and freight across the statewide and Great Lakes regional highway network
- **Objectives:**
  - Manage congestion and mitigate delay
  - Enable transportation emergency response
  - Warn and guide drivers
- **Mechanism:** Traveler-focused, performance-driven network of partnerships and technologies
- **Vision:** Integrated multistate regional transportation operations systems and services

*BTO ... taking care of business!*

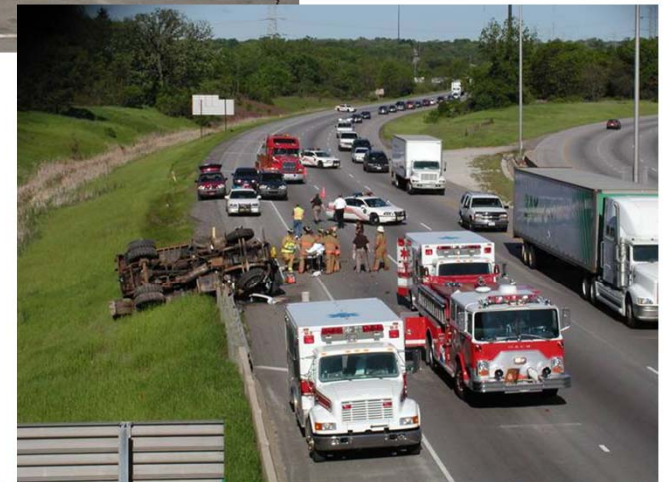


# WISDOT TIME Program: Lessons Learned

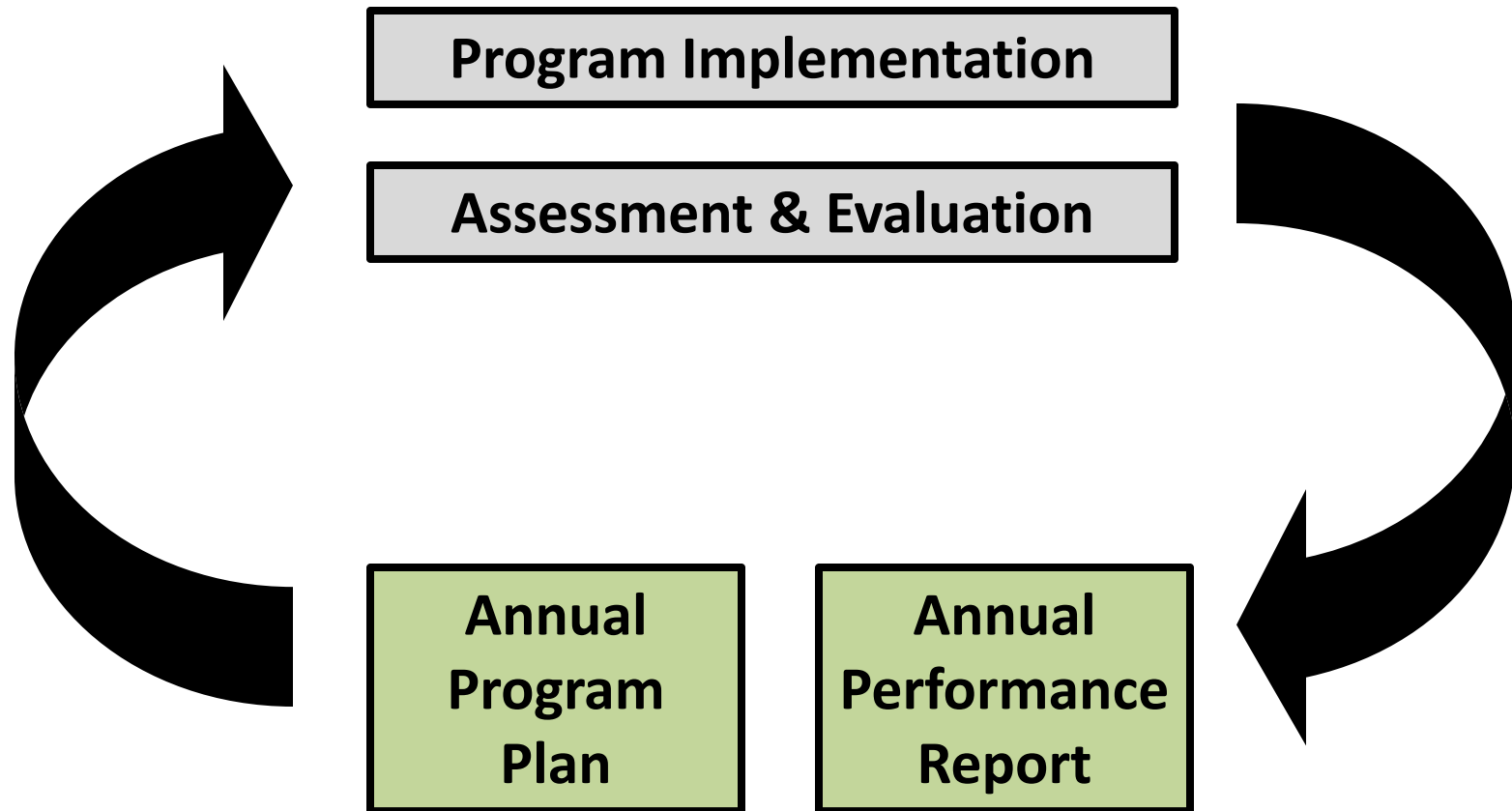
- Trusting Relationships are Fundamental
  - Transportation Public Safety Community has emerged
  - Sustainability is hard work
- Opportunism is Necessary
  - Offer immediate value to partners  
(work zone info, push bumpers, free training/debriefing, data/video, etc.)
  - Leverage crises: executive engagement “windows”
- Program is Foundational
  - Define TIM within a Traffic Operations Program & Organization
  - Recognize the “event continuum”: work zone...incident...disaster

# Traffic Incident Management Program Elements

1. Strategic Program Planning Process
2. ETO/TIM Operations & Response Plans
3. Partnership Agreements
4. Guidelines & Laws
  - Scene Management Guidelines,  
Move Over, Steer It/Clear It, etc.
5. Services, Tools, & Systems
  - Patrols, Crash Reconstruction,  
Traffic Management Teams,



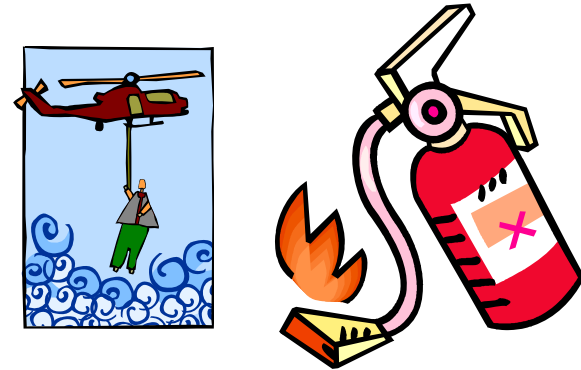
# Annualized System Operations Management Program Administration Process: National, Multi-State, State, Metro



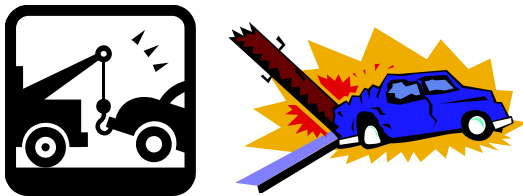
Transportation



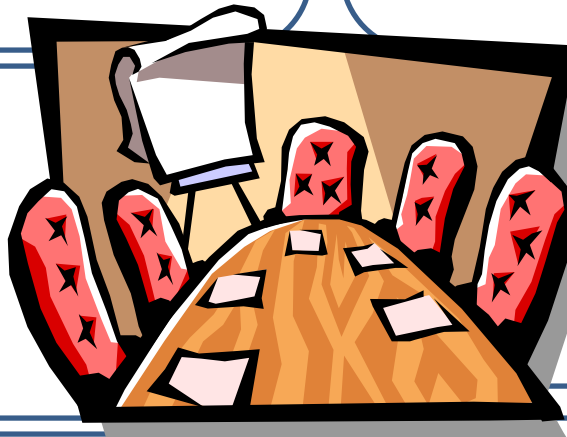
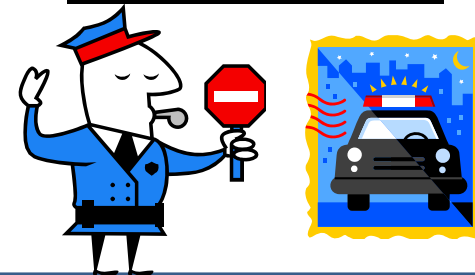
Fire & Rescue



Towing & Recovery



Law Enforcement



Public Safety Communications



Emergency Medical Services

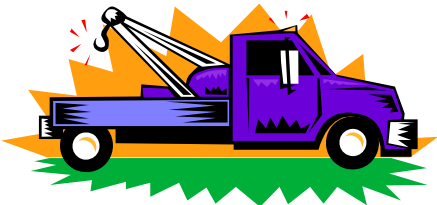




# The **National Unified Goal** for Traffic Incident Management



Responder Safety



Safe, Quick Clearance



Prompt, Reliable, Interoperable,  
Communications

# NTIMC Strategic Plan: Mission & Vision



- **Mission**

To link public safety and transportation communities to define, standardize, and advance the state of traffic incident management practice.

- **Vision**

Leading and supporting a national network of traffic incident management (TIM) programs that are consistently implemented



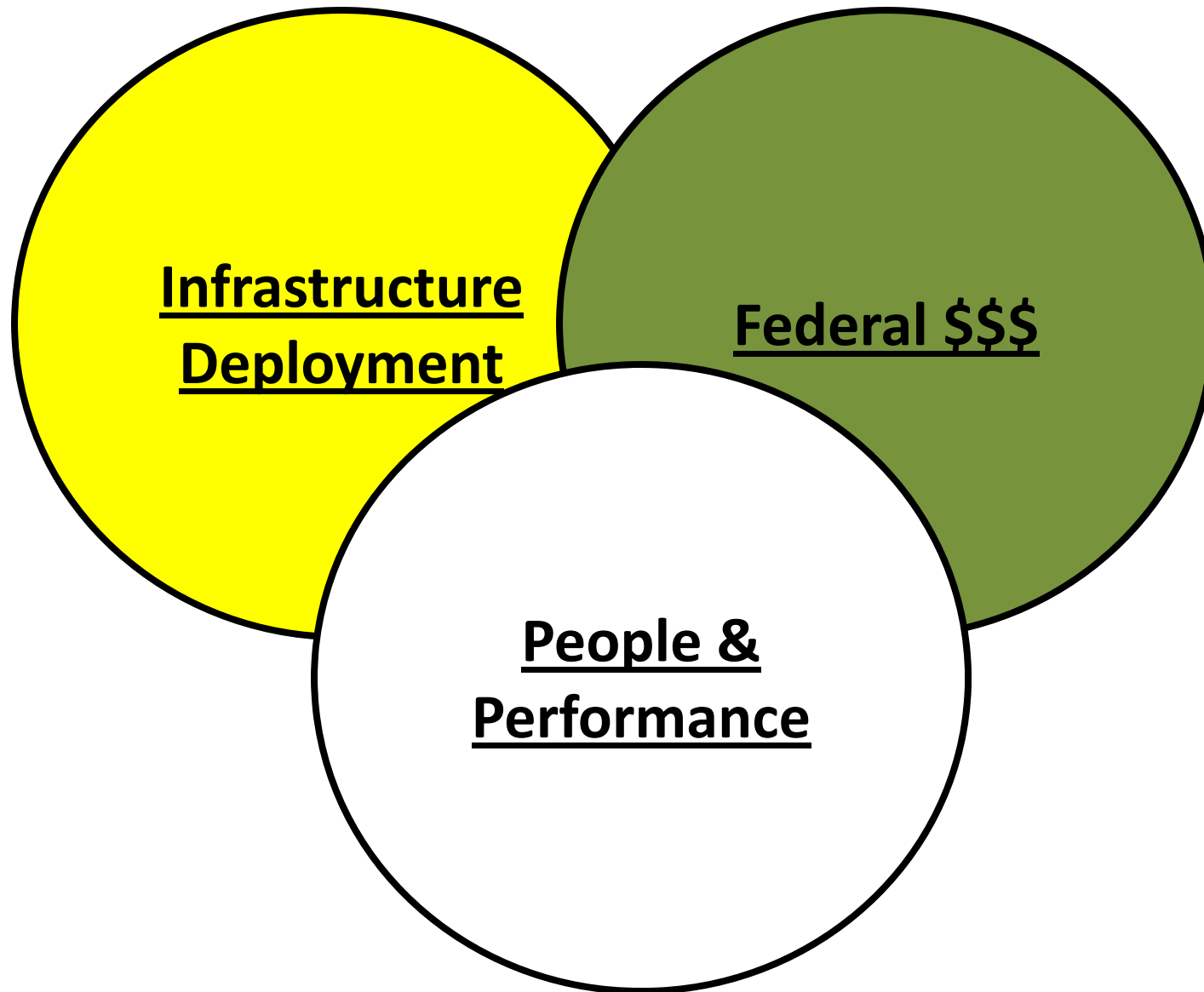
- A National TIM Team
  - Practitioners from all TIM disciplines
  - Encourages communication among all responders
- A Link
  - National TIM leadership to practitioners
  - A national voice for TIM practitioners
  - Seeks relationships with National TIM Practitioner Groups
- An information source
  - On the web (<http://sites.google.com/site/timnetworksite/>)
    - Submit your upcoming TIM event to be part of the National TIM Calendar
  - Monthly eNewsletter, *The Responder*
  - Online meeting registration
  - Speaker outreach for your event



# National TIM Initiatives

- Transportation Safety Advancement Group
  - Next Generation (NG) 911
- FHWA Roadmap
  - Metro Workshops – Executive, Program Leader, Responder
  - IACP Outreach & Partnership
  - National TIM Training Standardization
  - National TIM Framework (NIMS model “Doctrine”)
- TRB
  - Freeway Operations & RTSMO Committees
  - NCHRP – Visibility Agenda, TIM Performance Measures, Struck-by Incident Reporting System
  - SHRP – L12/L32 National TIM Trainer Development

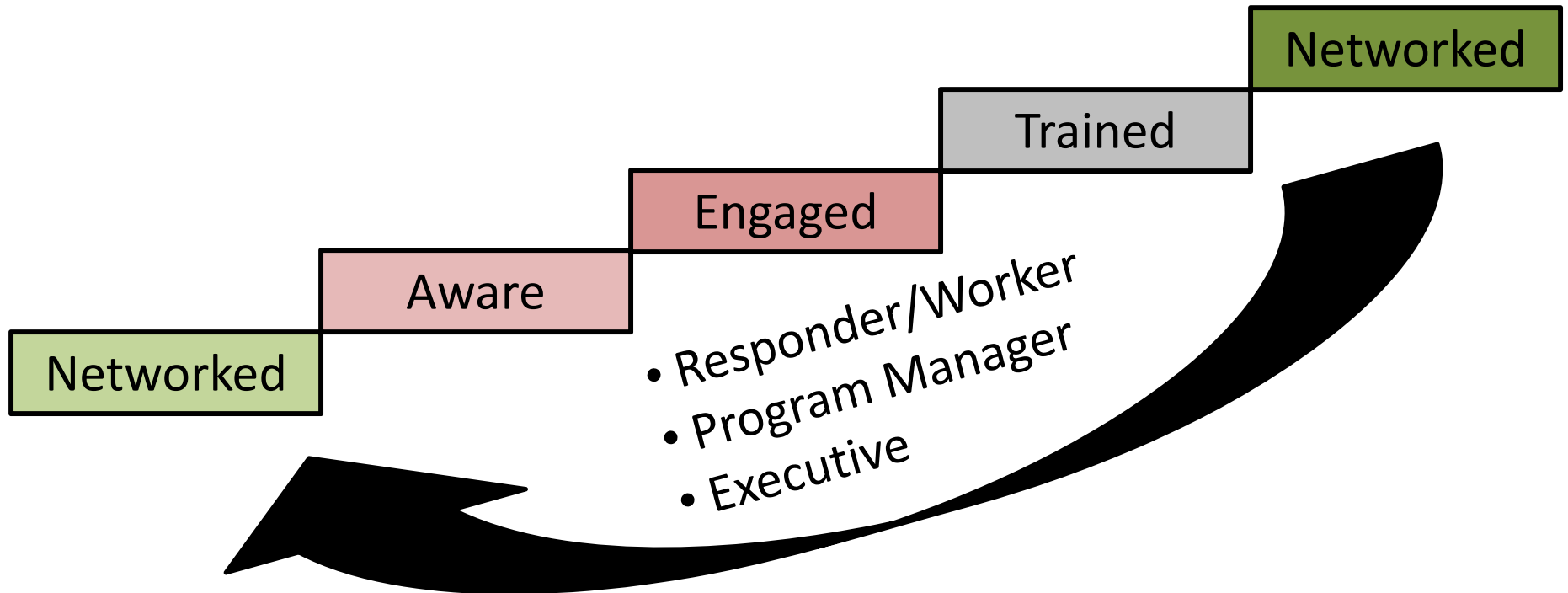
# National Transportation Policy: State DOT Perspective



# Next Generation TIM

- Inputs
  - Standardized, Multidisciplinary Training
  - Managed Organizational Capacity
- Outputs
  - Standardized TIM Practices & Protocols
  - “Connected Responder” Environment (NG911, RESCUME)
- Outcomes
  - Annualized Metro/State/National Performance Reporting
- Organizations
  - Operations Center of Excellence & Academies
  - National Operations Networks

# Incrementally Developing the National Operations Community



**Metropolitan, State, Multi-state Transportation System M&O Programs**

**National Operations Peer Network:**  
*TIM, Work Zone, TMC, Signal Systems*

**National Operations Continuing Education  
& PCB Program**

*(5-10 Regional)*

**Operations Academies**  
*(National)*

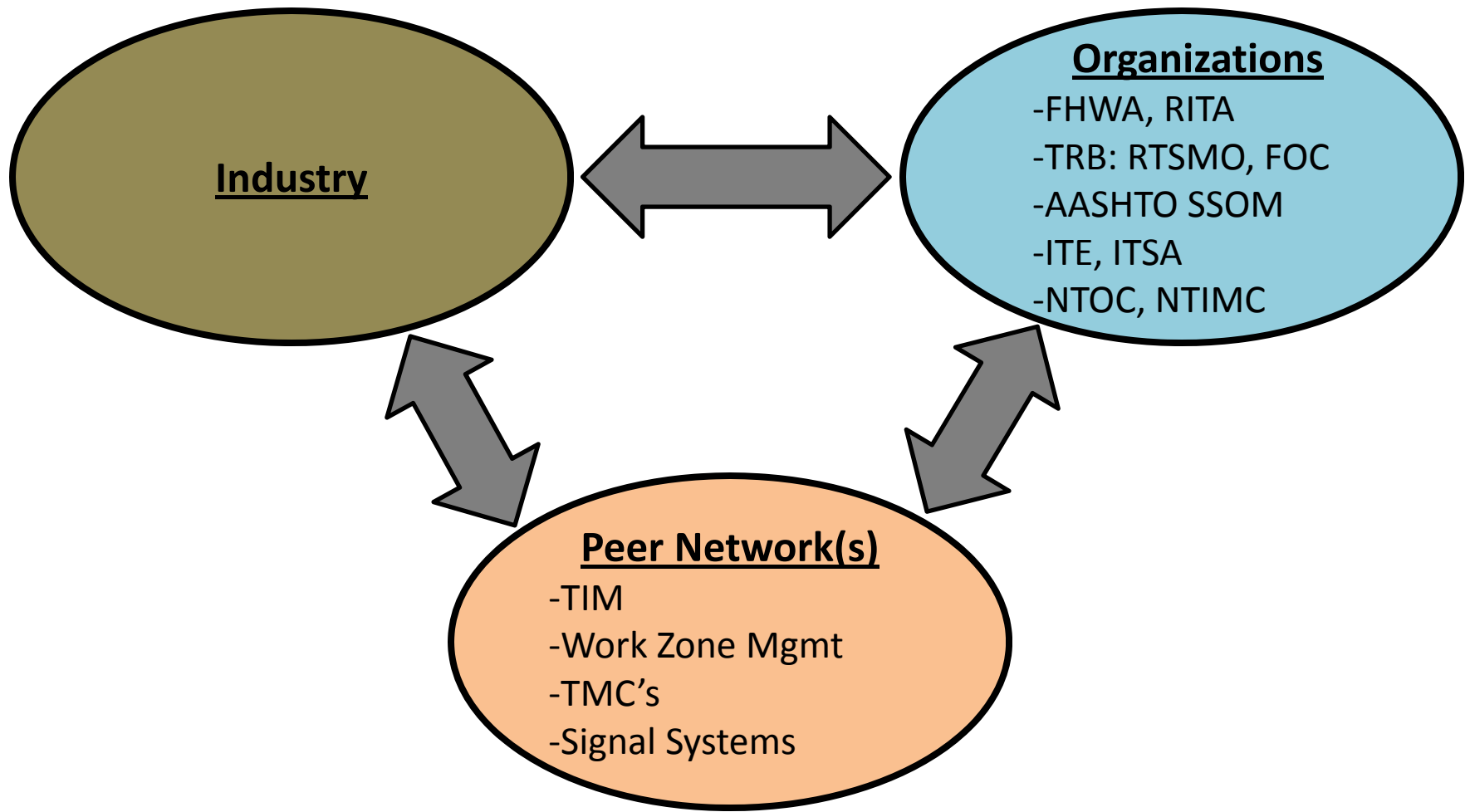
**Knowledge Transfer  
(& Training Needs Assessment?)  
System**

**Operations Center  
of  
Excellence**

**National Transportation Operations  
Workforce Development &  
Professional Capacity Building  
Support Framework**



# Peer Networks within the National Operations Community





**NTIMC Strategic Direction Setting:  
Stakeholder Webinar**  
*September 8, 1 p.m. Eastern Time*

**[www.timcoalition.org](http://www.timcoalition.org)**  
***john.corbin@dot.wi.gov***